

DRAYTON
CREATIVE DESIGNS
INNOVATIVE IDEAS
FABULOUS RESULTS

VOLUME

24

COOPRE

COLLECTION

◀◀◀ DISPLAY AND PRINT SOLUTIONS ▶▶▶

PRINTED
FLAGS

ROLLER
BANNERS

TABLE
CLOTHS

CAFÉ
BARRIERS

FABRIC
DISPLAYS

EXHIBITION
STANDS

PRINTED
GAZEBOS

LED
LIGHTBOXES

PLUS
1000'S MORE
ONLINE



DID YOU KNOW...

We are specialists in the following...

We facilitate customers of all sizes and provide a tailored end-to end print management service with exceptional results. Our ethos and culture are developed around a family business model and maintaining close relationships with our customers is the key to our continued success.

- A** A Boards
Acrylic Displays
Acrylic Printing
Appointment Cards
Atlas Ad Flags
Automatic Counters
Aluminium Poster Stands

- B** Backpack Flags
Bannerbow Systems
Banners
Barrier Jackets
Beanbags
Beer Mats
Bespoke Printing
Bollard Wraps
Booklets
Brochures
Budget A-boards
Bunting
Business Stationery
Business Cards

- C** Cable Systems
Café Barriers
Calendars
Cardboard Display Triangles
Chalkboards
Character Standees
Christmas Cards
Correx Boards
Crowd Barrier Jackets
Cube Seats
Cushions
Custom Flags
Calendars
Canvas Prints

- D** Deck Chairs
Desk Pads
Desktop Flags
Desktop Roller Banners
Dibond Boards
Digital Advertising Displays
Digital Booklets
Directors Chairs
Double-sided Roller Banners
Drum Fabric Displays
Dry Wipe Boards

- E** Eco-friendly
Estate Agent Boards
Exhibition Stands
Expovision Roller Banners

- F** Fabric Super Lightweight System
Feather Flags
Fence Scrim
Finesse Demo Counters
Floor Graphics
Flyers
Foamex Boards
Foil Printing
Folding Panel Kits
Forecourt Flags
Free-standing Cardboard Totem Displays
Free-standing Display Units
Free-standing Lightboxes
Floor Tape

- G** Gazebos
Giant Rhino Portable Flags
Glass Printing
Greeting Cards
Giant Cheques
Green Screen Banners

- H** Handwaving Flags
Hanging Banners
Hanging Displays
Heras Fencing
Hand Clappers

- I** Inflatable Tents
Information Stands
Interior Graphics
Invitations
iPad Holders

- J** Junior Folding Panel Kits

- K** Keder Fabric
Knitted Polyester
Kraft Business Cards

- L** Labels
Large-format Posters
Leaflet Dispensers
Leaflets
LED Lightboxes
LED Lights
Letterheads
Life-size Standees
Literature Stands
Litho Printing
Logo Mats

- M** Magnetic Boards
Magnetic Free-standing Frames
Media Walls
Meeting Pods
Menus
Merchandising Displays
Monsoon Banners
Magnetic Signs
Mesh Banners

- N** NCR Pads
Newsletters
Note Pads
Notebooks
Noticeboards

- O** Outdoor Banners
Outdoor Displays

- P** Parasols
Pitch Graphics
Podium Stands
Pop-out Banners
Pop-up Counters
Pop-up Display Kits
POS Stacking Display Cubes
Postcards
Posters
Perfect Bound Booklets
Presentation Folders
Printed Doors
Printed Paddles
Promo Counters
Promo Spin-the-Wheel
Promotional Products
PVC Banners

- Q** Quick Pop-up Bundles
Quick Tower Pop-ups

- R** Receipt Books
Rectangle Flags
Replacement Cassette Banners
Retail Signs
RSVP Cards
Recycled Range

- S** SEG Fabric Counters
SEG Fabric Pop-up Stands
SEG Pop-up Fabric Counters
Selfie Frames
Selfie Props
Shell Scheme Graphics
Snap Frames
Soft Touch Banner Stands
Soft Touch Drum Fabric Displays
Soft Touch Fabric Counters
Soft Touch Fabric Displays
Soft Touch iPad Stands
Soft Touch Meeting Pods
Soft Touch Snake Stands
Solus Demo Counters
Stadium Pitch Banners
Star Tents
Stickers
Stretch Tablecloths
Strut Cards

- T** Tablecloths
Tableplans
Teardrop Flags
Tension Fabric Systems
Trestle Tables
Twist Display Systems
Table Talkers

- U** Unbranded Samples

- V** Vinyl Banners
Vision Print Mats
Vision Site Master A-boards
Vortex Tension Banners

- W** Wall Graphics
Wall Mount Tension Fabric Systems
Wall Planners
Wallpaper Printing
Wedding Stationery
Wedge Rigid Banner Stands
White Boards
Wide Roller Banners
Windance Flags
Window Vinyl
Wood Printing
Wrapping Paper

- X** Xclaim Pop Up Stands

- Y** Yearly Wall Planners

- Z** Zed Up Literature Stands
Zenith Cases

Plus much more!

WELCOME TO THE

CORE

COLLECTION

◀◀◀ DISPLAY AND PRINT SOLUTIONS ▶▶▶

OUR RANGE OF ESSENTIAL EXHIBITION AND DISPLAY SOLUTIONS

We are one of the premier suppliers of large format printing in the UK. We utilise the latest technology that can produce prints up to five metres wide on a variety of substrates. We operate state-of-the-art printers which allow us to achieve high production output, up to 400 square metres an hour, and vibrant, dynamic graphics. We're also experts in sourcing bespoke products and creating custom made solutions, so however unique your project may be, please don't hesitate to get in touch. And remember – we print all products in full colour as standard, so any design is possible.

Whether you're new to us or have known us for many years, our team is always on hand to help however they can.



Number of working days to print and dispatch your product from artwork approval (unless advised otherwise as it is dependent on the quantity).

CONTENTS

Outdoor Range	04	Inflatable Tents	34	Pop Up Display & Exhibition Kits	97
Flags	05	Pop Out Banners	36	POS & Retail Products	109
Flag Bases	07	Monsoon Banners	36	Printed Cushions	111
Backpack Flags	10	Deck/Directors Chairs	37	Beanbags/Cube Seats	112
Team Flags	11	Outdoor Banners	38	Printed Paddles/Lollipop Signs	113
Crowd Surfers	12	Café Barriers	39	Desktop Flags/Banners	114
Pitch Banners	13	Pavement Signs	45	Wedge Banner/Spin the Wheel	115
Hand Waving Flags	14	Our Speciality	50	Logo Mats	116
Promotional Bunting	14	Bespoke Products	51	Printed Tape	117
Marching Banners	15	Envirovision	52	Standees	118
Parade Banners	16	Exhibition & Display Products	54	Tote Bags	119
Bannerbow Display	17	Fabric Displays	55	Digital Printing	120
Custom Flags	18	Fabric Exhibition Kits	65	Litho Printing	121
PVC & Fabric Banners	19	Hanging Structures	68	Promotional Gifts	122
Gazebos	21	Tablecloths	70	Rigid Media	123
Printed Parasols	31	Lightboxes	75	Roll Media Printing	125
Star Tents	32	Roller Banners	91	LinkUP	126

Check out our

CUSTOM PRINTED

OUTDOOR RANGE



HAVE A LOOK AT THE FULL RANGE OF OUTDOOR PRODUCTS THAT WE HAVE TO OFFER RANGING FROM FLAGS TO GAZEBOS TO CAFÉ BARRIERS AND MANY MORE.

Whether it's for an event, exhibition, or social occasion, we offer various products in an array of sizes to make your event memorable. We offer full colour print as standard, so any design is possible.

FIBREGLASS FLAG RANGE

Printed flags are a great way of promoting a special event or business to the public. They ensure that your message stands out and can be seen above the crowd. They can also be used as markers or information points at outdoor events, such as a car park or first-aid station.

- Available in four assembled heights* - 2.4m, 3m, 4m and 5.2m
- Choose from eight base options (see page 7 for full range)
- Graphic printed in full colour on 115gsm knitted polyester
- Available in both single-sided and double-sided print
- Includes drawstring carry bag for pole kit (larger carry bag available – see page 7 for more information)
- Suitable for both indoor and outdoor use
- 1-year warranty on hardware



FOLLOW THESE EASY STEPS

- Choose a pole size
- Choose single or double sided print
- Choose a flag base (see page 7)
- Add a carry bag

SIZE BREAKDOWN

ASSEMBLED HEIGHT	GRAPHIC SIZE
SMALL 2.4m	605mm (w) x 1660mm (h)
MEDIUM 3m	605mm (w) x 2377mm (h)
LARGE 4m	620mm (w) x 3460mm (h)
X-LARGE 5.2m	830mm (w) x 3960mm (h)

FIBREGLASS CURVE FLAG

SMALL 2.4M	MEDIUM 3M
Code: RFG024C-SS	Code: RFG03C-SS
Code: RFG024C-DS	Code: RFG03C-DS
LARGE 4M	EXTRA LARGE 5.2M
Code: RFG04C-SS	Code: RFG052C-SS
Code: RFG04C-DS	

POLES & CARRY BAG



FIBREGLASS FEATHER FLAG

SMALL 2.4M	MEDIUM 3M
Code: RFG024F-SS	Code: RFG03F-SS
Code: RFG024F-DS	Code: RFG03F-DS
LARGE 4M	EXTRA LARGE 5.2M
Code: RFG04F-SS	Code: RFG052F-SS
Code: RFG04F-DS	

FIBREGLASS BOLD FLAG

SMALL 2.4M	MEDIUM 3M
Code: RFG024B-SS	Code: RFG03B-SS
Code: RFG024B-DS	Code: RFG03B-DS
LARGE 4M	EXTRA LARGE 5.2M
Code: RFG04B-SS	Code: RFG052B-SS
Code: RFG04B-DS	

SS Single Sided DS Double Sided



FIBREGLASS CURVE FLAG

FIBREGLASS FEATHER FLAG

FIBREGLASS BOLD FLAG

*Please note that flag sizes are approximate and may vary due to stock availability.

FIBREGLASS TEARDROP FLAG



- Available in four assembled heights* - 2m, 2.6m, 3.2m and 4.8m
- Choose from eight base options (see page 7 for full range)
- Graphic printed in full colour on 115gsm knitted polyester
- Available in both single-sided and double-sided print
- Includes drawstring carry bag for pole kit
(larger carry bag available – see page 7 for more information)
- Suitable for both indoor and outdoor use
- 1-year warranty on hardware



POLES & CARRY BAG



FOLLOW THESE EASY STEPS

- Choose a pole size
- Choose single or double sided print
- Choose a flag base (see page 7)
- Add a carry bag

SIZE BREAKDOWN

ASSEMBLED HEIGHT	GRAPHIC SIZE
SMALL 2m	617mm (w) x 1243mm (h)
MEDIUM 2.6m	650mm (w) x 1990mm (h)
LARGE 3.2m	856mm (w) x 2322mm (h)
X-LARGE 4.8m	905mm (w) x 4050mm (h)

SMALL 2M	MEDIUM 2.6M	LARGE 3.2M	EXTRA LARGE 4.8M
Code: RFG020T-SS	Code: RFG026T-SS	Code: RFG032T-SS	Code: RFG048T-SS
Code: RFG020T-DS	Code: RFG026T-DS	Code: RFG032T-DS	

*Please note that flag sizes are approximate and may vary due to stock availability.

SS Single Sided DS Double Sided

FIBREGLASS RECTANGLE FLAG



- Available in three assembled heights* - 2.5m, 3.5m and 4.2m
- Choose from eight base options (see page 7 for full range)
- Graphic printed in full colour on 115gsm knitted polyester
- Available in both single-sided and double-sided print
- Includes drawstring carry bag for pole kit
(larger carry bag available – see page 7 for more information)
- Suitable for both indoor and outdoor use
- 1-year warranty on hardware



POLES & CARRY BAG



FOLLOW THESE EASY STEPS

- Choose a pole size
- Choose single or double sided print
- Choose a flag base (see page 7)
- Add a carry bag

SIZE BREAKDOWN

ASSEMBLED HEIGHT	GRAPHIC SIZE
SMALL 2.5m	750mm (w) x 1600mm (h)
MEDIUM 3.5m	750mm (w) x 2600mm (h)
LARGE 4.2m	750mm (w) x 3600mm (h)

SMALL 2.5M	MEDIUM 3.5M	LARGE 4.2M
Code: RFG025R-SS	Code: RFG035R-SS	Code: RFG042R-SS
Code: RFG025R-DS	Code: RFG035R-DS	

SS Single Sided DS Double Sided

FLAG BASES & ACCESSORIES

Choose your base...



SCREW SPIKE BASE

Made from strong PVC plastic, the spike screws down into soft ground and the flagpole pushes into the top. Comes with collapsible handles for easy installation and removal. Each screw spike base weighs approximately 0.4kg. Size: 100mm (L) x 100mm (W) x 420mm/190mm (H)

Code: **RBSCSPK**



GROUND SPIKE BASE

Made from galvanised stainless steel, the spike pushes down into soft ground and the flagpole pushes onto the top. Each ground spike base weighs approximately 1kg. Size: 90mm (L) x 90mm (W) x 600mm (H)

Code: **RBGRSPK**



CROSS BASE + WEIGHTING RING

Made from durable steel, the cross base is supplied with a set of ground pegs and a water fillable ring that adds an additional 2kg of weight. Each cross-base weighs approximately 3.65kg. Size: 610mm (L) x 610mm (W) x 200mm (H). Shown with water ring (12L)

Code: **RBCRSBA**



CAR WHEEL BASE

Made from durable steel, this base fits under the wheel of a car which anchors the base to the ground. Perfect for car showrooms, forecourts or outdoor events. Each car wheel base weighs approximately 3kg. Size: 600mm (L) x 160mm (W) x 300mm (H)

Code: **RBWHEBA**



RHINO SMALL & LARGE BASE

Made from recycled plastic, the small base can be filled with 25L of water or sand. Size: 430mm (L) x 430mm (W) x 330mm (H)

Made from recycled plastic, the large base can be filled with 33L of water or sand. Size: 500mm (L) x 500mm (W) x 400mm (H)

Code Small: **RBSWA25** Large: **RBLWA33**



V-SHAPED CAR BASE

Made from powder coated galvanised steel, this V-shape car base is designed to take on the weight of most cars and is suitable for all flag sizes. Each V-shaped car base weighs approximately 2kg. Size: 565mm (L) x 410mm (W) x 120mm (H)

Code: **RBVCAR**



RHINO CARRY BAG

Our carry bag is ideal for keeping your flagpole kit and flag safe, secure and clean. Complete with a handy shoulder strap for carrying the kit to your next event.

Size: 1500mm/1300mm x 300mm

Colour: Black

Code: **RCBAG**

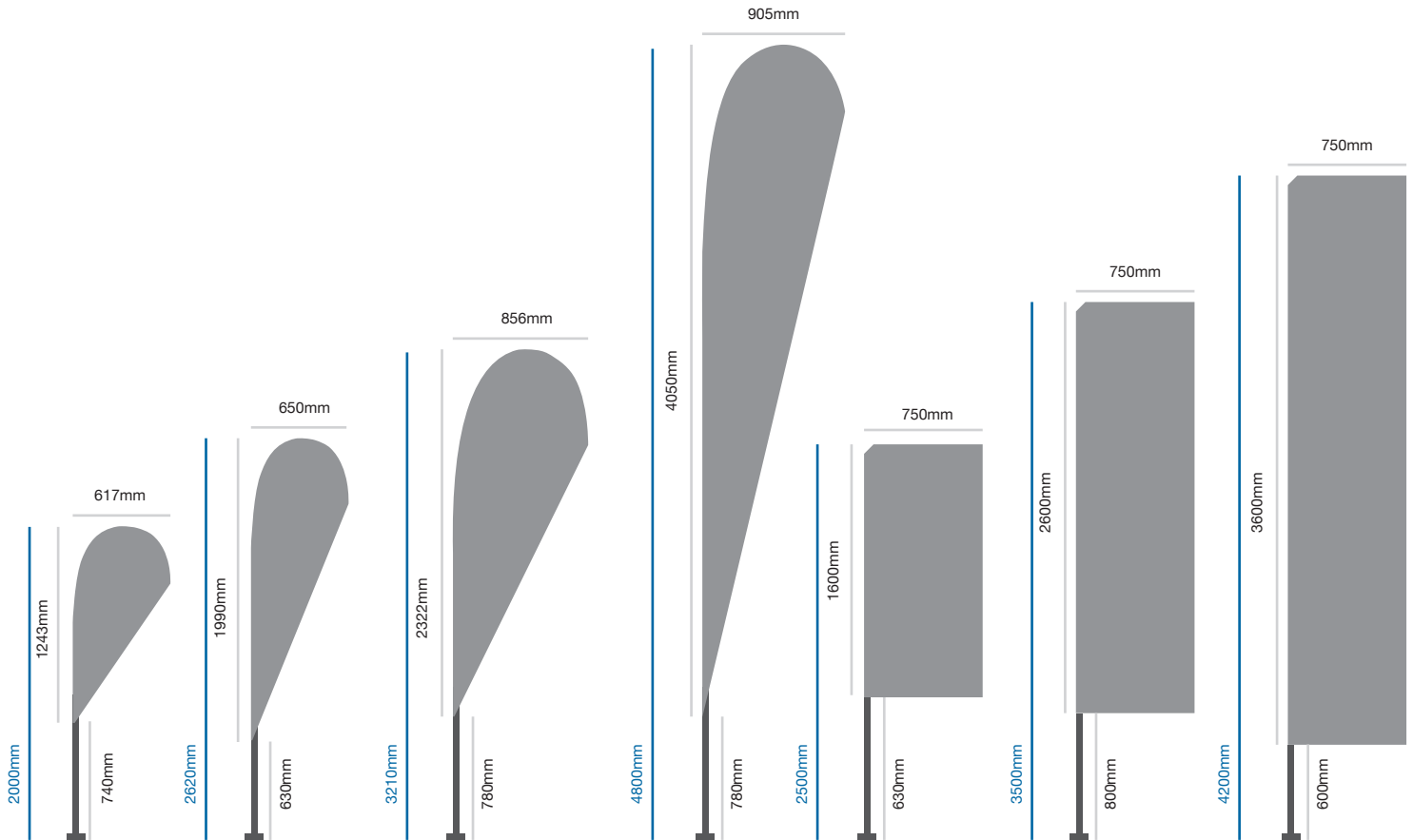


METAL STEEL PLATE BASE

Made from durable steel, our flat steel base plate sits securely on an even floor and the flagpole kits slips onto the spindle. Each metal steel plate base weighs approximately 10kg. Rotary fitting can be provided upon request. Size: 400mm (L) x 400mm (W) x 230mm (H)

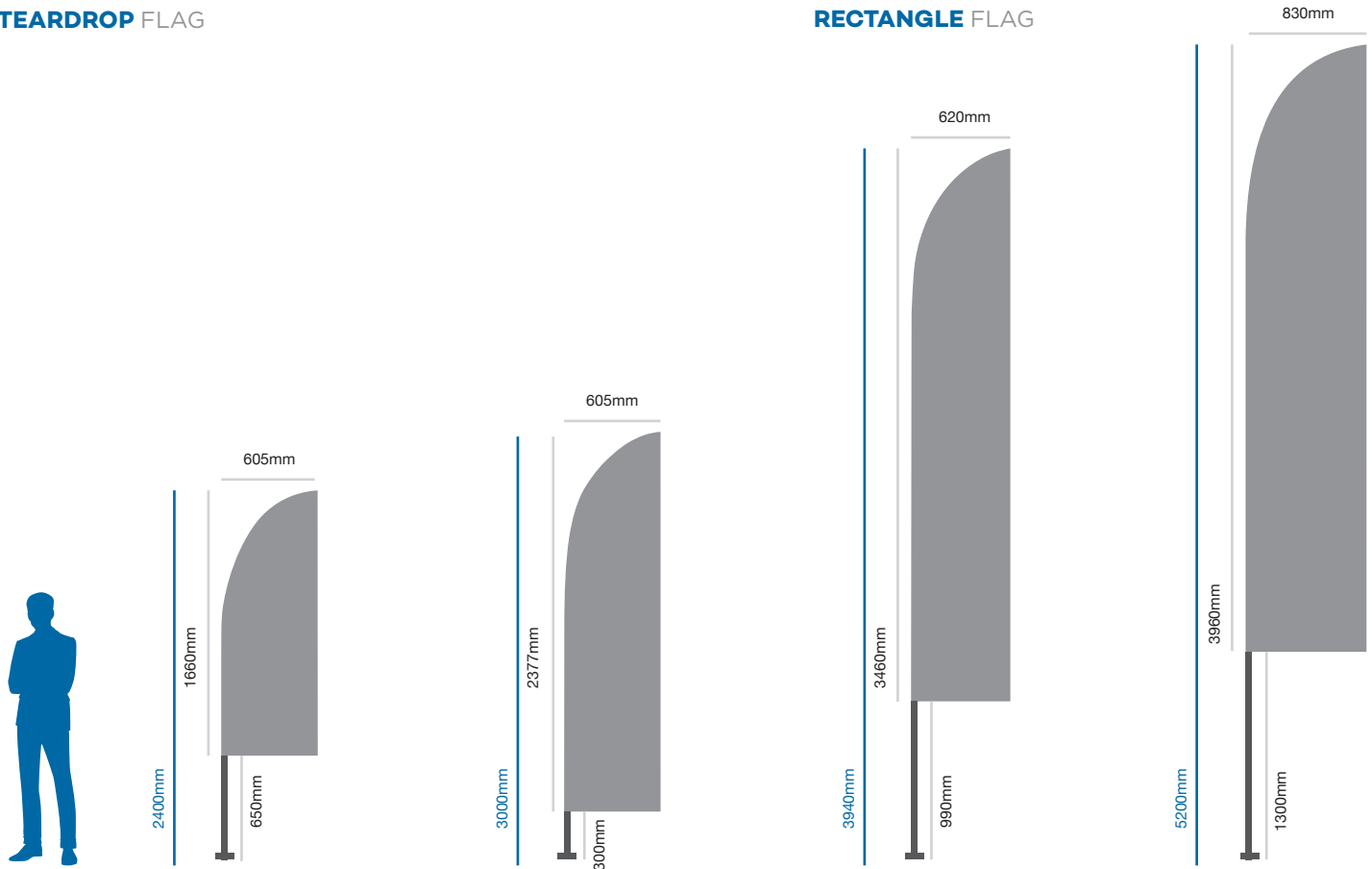
Code: **RBFLPT400**

PRINTED FLAG SIZES



TEARDROP FLAG

RECTANGLE FLAG



FEATHER/BOLD/CURVE FLAG

BACKPACK FLAGS



If you're planning a charity walk, outdoor event or special tour, our backpack flags are a great product to help promote your company or message. They are lightweight and designed to be comfortable enough to wear for long periods of time. Unlike carrying a traditional flag or banner, the wearer has both hands-free.

- Available in four styles - teardrop, rectangle, feather or x-banner
- All styles are available in either single-sided or double-sided print (except x-banner)
- Flags are printed on 115gsm knitted polyester
- Supplied with backpack hardware and carry bag
- Suitable for both indoor and outdoor use
- X-Banner flag printed on 440gsm PVC
- 1-year warranty on hardware

SIZE BREAKDOWN

TEARDROP	950mm (h) x 475mm (w)
RECTANGLE	1250mm (h) x 400mm (w)
FEATHER	1238mm (h) x 425mm (w)
X-BANNER	1200mm (h) x 500mm (w)

TEARDROP	FEATHER
Code: BPF01-SS	Code: BPF03-SS
Code: BPF01-DS	Code: BPF03-DS
RECTANGLE	X-BANNER
Code: BPF02-SS	Code: BPF04-SS
Code: BPF02-DS	

SS Single Sided **DS** Double Sided



TEARDROP BACKPACK FLAG



RECTANGLE BACKPACK FLAG



FEATHER BACKPACK FLAG



X-BANNER BACKPACK FLAG



Check out our

TEAM FLAGS

Our dynamic team flags are great for sporting events and can be used at festivals and parades too. With a range of sizes and full colour available, you can display your colours, club crest, promotional message – anything you want. We can also produce bespoke sized team flags, making sure your brand is represented in the best way and that your team grab attention during any game or match.



SMALL – 1.5M X 1.5M
Available with a small 2m
aluminium pole

SMALL - 1.5M X 1.5M

Code: **TF-15S**

Fitted with ties and
hemmed for the sleeve.
(No elastic sleeve)



MEDIUM – 1.7M X 1.7M
Available with our 3 piece
4.3m fibreglass pole

MEDIUM - 1.7M X 1.7M

Code: **TF-17M**

Produced with an
elasticated pole sleeve,
helping to secure the flag
to the fibreglass pole.



LARGE – 3M X 3M
Available with our 3 piece
4.3m fibreglass pole

LARGE - 3M X 3M

Code: **TF-30L**

Produced with an
elasticated pole sleeve,
helping to secure the flag
to the fibreglass pole.

Check out our

CUSTOM PRINTED

CROWD SURFERS



WE HAVE PRODUCED CROWD SURFERS, ALSO KNOWN AS CROWD BANNERS, FOR MANY OF THE BIGGEST FOOTBALL, RUGBY AND CRICKET TEAMS IN THE UK. THANKS TO OUR INHOUSE PRINTING AND SEWING TEAMS WE CAN TURN AROUND CROWD FLAGS QUICKLY TO YOUR REQUIRED SHAPE OR DESIGN.

Crowd surfers and banners are ideal for ceremonies and sporting stadium events and can be made to any shape or size, helping your design stand out from the crowd. These enormous bespoke flags and banners are an exciting way to create memorable displays and promote your brand or message.

Bespoke stadium crowd and shirt flags are a perfect way to get supporters excited and encourage crowd participation. Ideal for great media exposure and they can be used again and again.

10M X 6M

Code: **CS106-SS**

15M X 10M

Code: **CS1510-SS**

25M X 15M

Code: **CS2515-SS**

30M X 20M

Code: **CS3020-SS**

Check out our

CUSTOM PRINTED

PITCH BANNERS

Create your own custom sized pitch banner for an effective and engaging display that will be seen in front of huge crowds. Be assured that this is an easy lightweight solution which is easy to hold and transport as it is made from fire rated 115gsm knitted polyester.



RECTANGULAR

Used for country flags and bespoke designs

SMALL 10M X 6M

Code: **PBR-106-SS**

MEDIUM 18M X 12M

Code: **PBR-1812-SS**

LARGE 26M X 15M

Code: **PBR-2615-SS**

XLARGE 50M X 30M

Code: **PBR-5030-SS**



CIRCULAR

Ideal for centre circles to create your own stunning display

SMALL 9.3M X 9.3M

Code: **PBC-99-SS**

MEDIUM 13.9M X 13.9M

Code: **PBC-1313-SS**

LARGE 18.6M X 18.6M

Code: **PBC-1818-SS**



T-SHIRT

Create your own giant replica T-shirts for a memorable display

SMALL 3M X 2.8M

Code: **PBTS-32-SS**

MEDIUM 8M X 7.5M

Code: **PBTS-87-SS**

LARGE 16M X 15M

Code: **PBTS-1615-SS**

XLARGE 20M X 21M

Code: **PBTS-2021-SS**



CREST

Used for team badges and crests at events

SMALL 9M X 3M

Code: **PBCR-93-SS**

MEDIUM 12M X 9M

Code: **PBCR-129-SS**

LARGE 15M X 12M

Code: **PBCR-1512-SS**

XLARGE 12M X 18M

Code: **PBCR-1218-SS**

HANDWAVING FLAGS

Lightweight and cost-effective, our handwaving flags are perfect for sporting events, parades and parties.

- For outdoor or indoor use
- Printed on either paper or 115gsm knitted polyester
- Rectangular shape
- Available with plastic eco stick or wooden stick
- Single sided print on fabric flags
- Double sided print on paper flags
- On the knitted polyester option, the design shows correctly to one side and is mirror image to reverse



A5 FABRIC	A5 PAPER
Code: HFFA5	Code: HFPA5
A4 FABRIC	A4 PAPER
Code: HFFA4	Code: HFPA4



WITH PLASTIC POLE

WITH WOODEN POLE

PROMOTIONAL BUNTING

Custom printed bunting is a versatile and eye-catching product that would add colour to any event. Printed with your brand logo or image, the pennants can be triangular, rectangular, or custom cut to almost any shape. Bunting is suitable for both indoor and outdoor spaces.

- Supplied in 10m lengths
- 24 printed pennants per length
- Pennant size 290mm x 200mm
- Printed on either 130gsm paper or 115gsm knitted polyester
- For outdoor or indoor use
- Triangular or rectangular pennants
- Single sided print on fabric bunting
- Double sided print on paper bunting
- On knitted polyester option, the design shows correctly to one side and is mirror image to reverse



PAPER BUNTING TRIANGLE	FABRIC BUNTING TRIANGLE
Code: BUNPT	Code: BUNFT
PAPER BUNTING RECTANGLE	FABRIC BUNTING RECTANGLE
Code: BUNPR	Code: BUNFR



RECTANGLE BUNTING

TRIANGLE BUNTING



Check out our

CUSTOM PRINTED

MARCHING BANNERS



MARCHING BANNERS ARE MADE FOR TWO PEOPLE TO CARRY AND IT'S A GUARANTEE THAT YOU'LL BOTH BE NOTICED.

Two 18mm diameter wooden poles are supplied which you simply slip into the pole pockets and you're all set. They are ideal for festivals and parades and can be made to any shape or size, helping your message stand out from the crowd and create a memorable lasting impact.

PRINTED ON 115GSM KNITTED POLYESTER WITH A 2.4M POLE BOTH SIDES

1500MM X 1000MM	1500MM X 1500MM	2000MM X 1000MM	2000MM X 1500MM	3000MM X 1000MM	3000MM X 1500MM
Code: MB-1510-FK-SS	Code: MB-1515-FK-SS	Code: MB-2010-FK-SS	Code: MB-2015-FK-SS	Code: MB-3010-FK-SS	Code: MB-3015-FK-SS

PRINTED ON 210GSM DISPLAY POLYESTER WITH A 2.4M POLE BOTH SIDES

1500MM X 1000MM	1500MM X 1500MM	2000MM X 1000MM	2000MM X 1500MM	3000MM X 1000MM	3000MM X 1500MM
Code: MB-1510-DP-SS	Code: MB-1515-DP-SS	Code: MB-2010-DP-SS	Code: MB-2015-DP-SS	Code: MB-3010-DP-SS	Code: MB-3015-DP-SS

Check out our

CUSTOM PRINTED

PARADE BANNERS



OUR PARADE BANNERS ARE LIKE OUR MARCHING BANNERS, BUT THEY ARE SUPPLIED WITH JUST ONE WOODEN DOWEL OR ALUMINIUM POLE (Depending on the banner size).

The banner can be held by multiple people as they march together. These are great for parades, festivals, and public gatherings. We offer full colour print as standard so you can design your banner however you like.

PRINTED ON 115GSM KNITTED POLYESTER WITH A 2.4M WOODEN POLE

1800MM X 750MM

Code: **PB-1875-FK-SS**

2000MM X 750MM

Code: **PB-2075-FK-SS**

PRINTED ON 210GSM DISPLAY POLYESTER WITH A 2.4M WOODEN POLE

1800MM X 750MM

Code: **PB-1875-DP-SS**

2000MM X 750MM

Code: **PB-2075-DP-SS**

GIANT RHINO

PORTABLE FLAG

Our Giant Rhino Portable Flags are designed to offer the upmost impact at your next event, but be lightweight and easy to transport. Simply fill the base with water to add weight and then attach the pole and flag.

- Available in two assembled heights – 4m and 5m
- Graphic printed in full colour on 115gsm knitted polyester
- Capable of being used in wind speeds of up to 18mph/29kph
- The capacity of the water base is approximately 50 litres (4m) 66 litres (5m)
- Suitable for both indoor and outdoor use



SIZE BREAKDOWN

ASSEMBLED HEIGHT	GRAPHIC SIZE
WIND DANCER 4m	800mm (w) x 2800mm (h)
WIND DANCER 5m	1000mm (w) x 3500mm (h)

4M	5M
Code: GRPF04-SS	Code: GRPF05-SS
Code: GRPF04-DS	Code: GRPF05-DS

SS Single Sided **DS** Double Sided

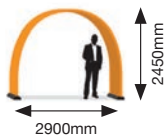


BANNERBOW

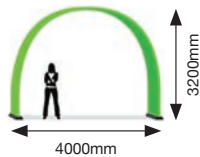
DISPLAY

Bannerbow event arches are the perfect solution for sports arenas, car showrooms, retail environments, trade shows and events. Easy to assemble in just a few minutes, without the need for any tools, ladders or special equipment. The graphics are also interchangeable.

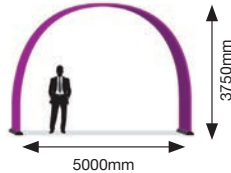
SMALL



MEDIUM



LARGE



BANNERBOW INDOOR*

COMPLETE SYSTEM INCLUDING GRAPHICS

CODE	DESCRIPTION
IBBSS29	Complete system SMALL SS with graphics
IBBMS40	Complete system MEDIUM SS with graphics
IBBLS50	Complete system LARGE SS with graphics
IBBSD29	Complete system SMALL DS with graphics
IBBMD40	Complete system MEDIUM DS with graphics
IBBLD50	Complete system LARGE DS with graphics

*Lightweight indoor base included

SS Single Sided **DS** Double Sided



BANNERBOW OUTDOOR**

COMPLETE SYSTEM INCLUDING GRAPHICS

CODE	DESCRIPTION
OBBSS29	Complete system SMALL SS with graphics
OBBMS40	Complete system MEDIUM SS with graphics
OBBLS50	Complete system LARGE SS with graphics

**Heavyweight outdoor base included

CUSTOM PRINTED FLAGS

Whether it's a sporting occasion, a commemorative event or a charity fundraiser, we can produce flags of almost any size and quantity with a choice of finishing. We print full colour as standard, so any design is possible. We also offer both single-sided and double-sided options.

If you require a bespoke size, please contact our sales team for more information or to discuss your requirements. Any size available up to 3m wide.

Available Finishes:

- Metal Eyelets
- Rope & Toggle
- Pole Pocket
- Plastic D-Ring



SIZE BREAKDOWN

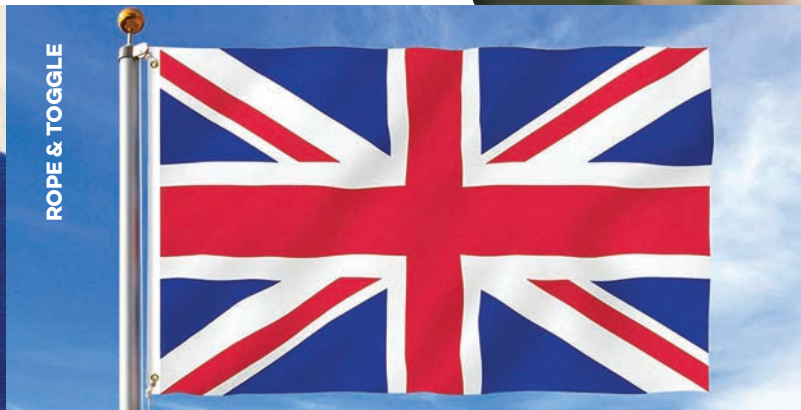
3ft x 2ft	915mm x 610mm
4ft x 2ft	1220mm x 610mm
5ft x 3ft	1524mm x 915mm
6ft x 4ft	1830mm x 1220mm

3FT W X 2FT H SS	3FT W X 2FT H DS
Code: 3X2CFSS	Code: 3X2CFDS
4FT W X 2FT H SS	4FT W X 2FT H DS
Code: 4X2CFSS	Code: 4X2CFDS
5FT W X 3FT H SS	5FT W X 3FT H DS
Code: 5X3CFSS	Code: 5X3CFDS
6FT W X 4FT H SS	6FT W X 4FT H DS
Code: 6X4CFSS	Code: 6X4CFDS

SS Single Sided DS Double Sided



METAL EYELETS



ROPE & TOGGLE



POLE POCKET



PLASTIC D-RING

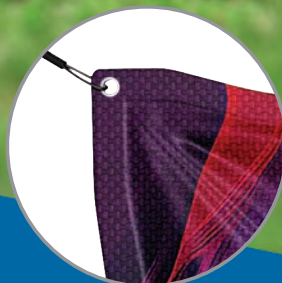
Check out our

PVC & FABRIC BANNERS

PVC banners are a classic advertising media. We print full colour, so any design is possible. All PVC banners are hemmed and finished with eyelets as standard. For bespoke sizes please contact our sales team for pricing information.



SUPPLIED WITH EYELETS



PVC BANNERS

PVC 6FT W X 2FT H Code: PVC6X2	PVC 6FT W X 3FT H Code: PVC6X3	PVC 6FT W X 4FT H Code: PVC6X4	PVC 8FT W X 2FT H Code: PVC8X2	PVC 8FT W X 3FT H Code: PVC8X3	PVC 8FT W X 4FT H Code: PVC8X4
------------------------------------------	------------------------------------------	------------------------------------------	------------------------------------------	------------------------------------------	------------------------------------------

All PVC banners printed on 440gsm PVC, with hemming and eyelets as standard.

FABRIC BANNERS

FABRIC 6FT W X 2FT H Code: FAB6X2	FABRIC 6FT W X 3FT H Code: FAB6X3	FABRIC 6FT W X 4FT H Code: FAB6X4	FABRIC 8FT W X 2FT H Code: FAB8X2	FABRIC 8FT W X 3FT H Code: FAB8X3	FABRIC 8FT W X 4FT H Code: FAB8X4
---------------------------------------------	---------------------------------------------	---------------------------------------------	---------------------------------------------	---------------------------------------------	---------------------------------------------

All fabric banners printed on 210gsm display polyester, with hemming and eyelets as standard.

CROWD BARRIER JACKET



Whether it's a charity fun run, a sporting event or music festival, crowd barrier jackets are a great way of directing people and helping to keep everyone safe. They are also a fantastic way to promote your event, brand or message.

With full colour printing as standard, any design is possible. We print bespoke sizes, please contact our sales team for pricing information.



2200MM W X 900MM H Code: **CRB-2200-BM-SS** **2200MM W X 900MM H** Code: **CRB-2200-BM-DS**

Jacket printed single sided on 330gsm PVC Mesh. Jacket printed double sided on 330gsm PVC Mesh.

2500MM W X 900MM H Code: **CRB-2500-BM-SS** **2500MM W X 900MM H** Code: **CRB-2500-BM-DS**

Jacket printed single sided on 330gsm PVC Mesh. Jacket printed double sided on 330gsm PVC Mesh.

2200MM W X 900MM H Code: **CRB-2200-AM-SS** **2200MM W X 900MM H** Code: **CRB-2200-AM-DS**

Jacket printed single sided on 115gsm Aero Mesh Mesh. Jacket printed double sided on 115gsm Aero Mesh.

2500MM W X 900MM H Code: **CRB-2500-AM-SS** **2500MM W X 900MM H** Code: **CRB-2500-AM-DS**

Jacket printed single sided on 115gsm Aero Mesh Mesh. Jacket printed double sided on 115gsm Aero Mesh.

SS Single Sided **DS** Double Sided

HERAS FENCING BANNERS



The classic solution for construction sites, new home developments and major building projects, Heras fence covers allow you to clearly indicate work areas, keeping both staff and the general public safe. They are also a fantastic way to promote your brand or message, and with full colour printing as standard, any design is possible.

We print custom sizes, please contact our sales team for pricing information.

3450MM W X 2000MM H Code: **HF-3400-BM-SS** **3450MM W X 2000MM H** Code: **HF-3400-AM-SS**

Printed single sided on 330gsm PVC Mesh. Printed single sided on 115gsm Aero Mesh.

SS Single Sided



Check out our

CUSTOM PRINTED

GAZEBOS



OUR RHINO GAZEBOS ARE ONE OF THE MOST POPULAR PRODUCTS THAT WE OFFER, AS THEY CAN BE USED FOR BOTH CORPORATE AND PERSONAL EVENTS.

They provide a great focal point, act as a hosting venue, or provide shelter from the sunny (or rainy) weather. Gazebos are made up of a sturdy 40mm hexagonal aluminium frame and full colour printed graphics. If required, the walls can be printed on the inside area too at an additional cost. We print gazebos in full colour, so any design is possible.

Some customers require a gazebo with doors and windows, and we can add these during the order process. Please contact our sales team for more information.

THE STANDARD KIT

- x1 40mm hexagonal aluminium frame (height adjustable)
- x1 Full colour single sided printed canopy (600D polyester)
- Wheeled carry bag for gazebo frame
- Pack of ground pegs and guide ropes
- 12-month gazebo frame warranty

2 X 2	3 X 4.5
Code: RGSTD2X2	Code: RGSTD3X45
3 X 3	3 X 6
Code: RGSTD3X3	Code: RGSTD3X6

Gazebo leg weights

Supplied in boxes of two.

8.5KG CONCRETE
Code: **GLW85**



RHINO



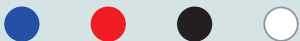
Carry bag included.

THE STANDARD PLUS KIT

- x1 40mm hexagonal aluminium frame (height adjustable)
- x1 Full dye sublimation single sided printed canopy
- x1 Full dye sublimation single sided printed half-wall (x2 when ordering the 3m x 6m version)
- x1 Half-wall bars (x2 when ordering the 3m x 6m version)
- Wheeled carry bag for gazebo frame
- Pack of ground pegs and guide ropes
- Printed full colour on 600D polyester
- Waterproof and flame retardant
- 12-month gazebo frame warranty

2 X 2	3 X 4.5
Code: RGSTDPL2X2	Code: RGSTDPL3X45
3 X 3	3 X 6
Code: RGSTDPL3X3	Code: RGSTDPL3X6

Need the basics?



If you're after our basic gazebo setup with plain walls and canopies, we offer a set range of colours below at affordable prices. **Get in touch with our sales team to find out more.**



RHINO



Carry bag included.

THE STANDARD PRO KIT

- x1 40mm hexagonal aluminium frame (height adjustable)
- x1 Full dye sublimation single sided printed canopy
- Wheeled carry bag for gazebo frame
- Pack of ground pegs and guide ropes
- x1 Trestle table: 750mm (h) x 1830mm (w) x 750mm (d)
- x1 1780mm x 2780mm full colour printed tablecloth (210gsm display polyester)
- Printed full colour on 600D polyester
- Waterproof and flame retardant
- 12-month gazebo frame warranty

2 X 2	3 X 4.5
Code: RGSTDPRO2X2	Code: RGSTDPRO3X45
3 X 3	3 X 6
Code: RGSTDPRO3X3	Code: RGSTDPRO3X6

Gazebo leg weights

Supplied in boxes of two.



8.5KG CONCRETE

Code: **GLW85**



Carry bag included.

THE COMPLETE KIT

- x1 40mm hexagonal aluminium frame (height adjustable)
- x1 Full dye sublimation single sided printed canopy
- x3 Full dye sublimation single sided printed walls
- Wheeled carry bag for gazebo frame
- Pack of ground pegs and guide ropes
- Printed full colour on 600D polyester
- Waterproof and flame retardant
- 12-month gazebo frame warranty

2 X 2	3 X 4.5
Code: RGCOM2X2	Code: RGCOM3X45
3 X 3	3 X 6
Code: RGCOM3X3	Code: RGCOM3X6

Gazebo leg weights

Supplied in boxes of two.



8.5KG CONCRETE

Code: **GLW85**



Carry bag included.

THE IMPERIAL KIT

- x1 40mm hexagonal aluminium frame (height adjustable)
- x1 Full dye sublimation single sided printed canopy
- x3 Single sided half walls (x4 when ordering 3x6m)
- x3 Half wall bars (x4 when ordering 3x6m)
- Wheeled carry bag for gazebo frame
- Pack of ground pegs and guide ropes
- Printed full colour on 600D polyester
- Waterproof and flame retardant
- 12-month gazebo frame warranty

2 X 2	3 X 4.5
Code: RG IPL2X2	Code: RG IPL3X45
3 X 3	3 X 6
Code: RG IPL3X3	Code: RG IPL3X6

Gazebo leg weights

Supplied in boxes of two.

8.5KG CONCRETE
Code: **GLW85**



Carry bag included.

THE DISCOVER KIT

- x1 40mm hexagonal aluminium frame (height adjustable)
- x1 Full dye sublimation single sided canopy
- x1 Full dye sublimation single sided printed wall
- Wheeled carry bag for gazebo frame
- Pack of ground pegs and guide ropes
- Printed full colour on 600D polyester
- Waterproof and flame retardant
- 12-month gazebo frame warranty

2 X 2	3 X 4.5
Code: RG DIS2X2	Code: RG DIS3X45
3 X 3	3 X 6
Code: RG DIS3X3	Code: RG DIS3X6

Gazebo leg weights

Supplied in boxes of two.

8.5KG CONCRETE
Code: **GLW85**



Carry bag included.

DISCOVER PLUS KIT

- x1 40mm hexagonal aluminium frame (height adjustable)
- x1 Full dye sublimation single sided printed canopy
- x1 Full dye sublimation single sided printed wall
- Wheeled carry bag for gazebo frame
- Pack of ground pegs and guide ropes
- x1 Trestle table: 750mm (h) x 1830mm (w) x 750mm (d)
- x1 1780mm x 2780mm full colour printed tablecloth (210gsm display polyester)
- Printed full colour on 600D polyester
- Waterproof and flame retardant
- 12-month gazebo frame warranty

2 X 2	3 X 4.5
Code: RGDISPL2X2	Code: RGDISPL3X45
3 X 3	3 X 6
Code: RGDISPL3X3	Code: RGDISPL3X6

Gazebo leg weights

Supplied in boxes of two.

8.5KG CONCRETE
Code: **GLW85**



Carry bag included.

DAYLIGHT KIT

- x1 40mm hexagonal aluminium frame (height adjustable)
- x1 Full dye sublimation single sided printed canopy
- x1 Full dye sublimation single sided printed wall
- x2 Full dye sublimation single sided printed half-walls
- x2 Half-wall bars
- Wheeled carry bag for gazebo frame
- Pack of ground pegs and guide ropes
- Printed full colour on 600D polyester
- Waterproof and flame retardant
- 12-month gazebo frame warranty

2 X 2	3 X 4.5
Code: RGDAY2X2	Code: RGDAY3X45
3 X 3	3 X 6
Code: RGDAY3X3	Code: RGDAY3X6

Gazebo leg weights

Supplied in boxes of two.

8.5KG CONCRETE
Code: **GLW85**



Carry bag included.

DAYLIGHT PLUS KIT



RHINO



- x1 40mm hexagonal aluminium frame (height adjustable)
- x1 Full dye sublimation single sided printed canopy
- x1 Full dye sublimation single sided printed wall
- x2 Full dye sublimation single sided printed half-walls
- x2 Half-wall bars
- Wheeled carry bag for gazebo frame
- Pack of ground pegs and guide ropes
- x1 Outdoor Fabric Pop Up Counter
- Printed full colour on 600D polyester
- Waterproof and flame retardant
- 12-month gazebo frame warranty

2 X 2	3 X 4.5
Code: RGDAYPL2X2	Code: RGDAYPL3X45
3 X 3	3 X 6
Code: RGDAYPL3X3	Code: RGDAYPL3X6



Carry bag included.

Gazebo leg weights

Supplied in boxes of two.



8.5KG CONCRETE

Code: **GLW85**

VISION KIT



RHINO



- x1 40mm hexagonal aluminium frame (height adjustable)
- x1 Full dye sublimation single sided printed canopy
- x1 Full dye sublimation single sided printed wall
- x2 Full dye sublimation single sided printed half-walls
- x2 Half-wall bars
- Wheeled carry bag for gazebo frame
- Pack of ground pegs and guide ropes
- x1 Trestle table: 750mm (h) x 1830mm (w) x 750mm (d)
- x1 Full dye sublimation printed tablecloth (1780mm x 2780mm)
- Printed full colour on 600D Polyester
- Waterproof and flame retardant
- 12-month gazebo frame warranty

2 X 2	3 X 4.5
Code: RGVIS2X2	Code: RGVIS3X45
3 X 3	3 X 6
Code: RGVIS3X3	Code: RGVIS3X6



Carry bag included.

Gazebo leg weights

Supplied in boxes of two.



8.5KG CONCRETE

Code: **GLW85**

THE VISION PLUS KIT

- x1 40mm hexagonal aluminium frame (height adjustable)
- x1 Full colour printed canopy (600D polyester)
- x1 Full colour single sided printed wall (600D polyester)
- x2 Full dye sublimation single sided printed half-walls (600D polyester)
- x2 Half-wall bars
- Wheeled carry bag for gazebo frame
- Pack of ground pegs and guide ropes
- x2 2m full colour printed single sided fibreglass teardrop flags (115gsm knitted polyester)
- x2 Flag fixing brackets
- x1 Trestle table: 750mm (h) x 1830mm (w) x 750mm (d)
- x1 1780mm x 2780mm full colour printed tablecloth (210gsm display polyester)
- 12-month gazebo frame warranty

2 X 2	3 X 4.5
Code: RGVISPL2X2	Code: RGVISPL3X45
3 X 3	3 X 6
Code: RGVISPL3X3	Code: RGVISPL3X6

Gazebo leg weights

Supplied in boxes of two.

8.5KG CONCRETE
Code: **GLW85**



Carry bag included.

EVENT KIT

- x1 40mm hexagonal aluminium frame (height adjustable)
- x1 Full dye sublimation single sided printed canopy
- x1 Full dye sublimation single sided printed wall
- x2 Full dye sublimation single sided printed half-walls
- x2 Half-wall bars
- Wheeled carry bag for gazebo frame
- Pack of ground pegs and guide ropes
- x2 3m full colour single sided printed curve flags (115gsm knitted polyester)
- x2 Small water bases
- Printed full colour on 600D polyester
- Waterproof and flame retardant
- 12-month gazebo frame warranty

2 X 2	3 X 4.5
Code: RGEVE2X2	Code: RGEVE3X45
3 X 3	3 X 6
Code: RGEVE3X3	Code: RGEVE3X6



Carry bag included.

THE EVENT PRO KIT



RHINO



- x1 40mm hexagonal aluminium frame (height adjustable)
- x1 Full dye sublimation single sided printed canopy
- x1 Full dye sublimation single sided printed wall
- x2 Full dye sublimation single sided printed half-walls
- x2 Half-wall bars
- Wheeled carry bag for gazebo frame
- Pack of ground pegs and guide ropes
- x2 3m full colour single sided printed curve flags (115gsm knitted polyester)
- x2 Small water bases
- x1 Outdoor Fabric Pop Up Counter
- Printed full colour on 600D polyester
- Waterproof and flame retardant
- 12-month gazebo frame warranty

2 X 2	3 X 4.5
Code: RGEVEPR2X2	Code: RGEVEPR3X45
3 X 3	3 X 6
Code: RGEVEPR3X3	Code: RGEVEPR3X6



Carry bag included.

THE ULTIMATE KIT



RHINO



- x1 40mm hexagonal aluminium frame (height adjustable)
- x1 Full dye sublimation single sided printed canopy
- x3 Full dye sublimation single sided printed walls
- Wheeled carry bag for gazebo frame
- Pack of ground pegs and guide ropes
- x2 3m full colour single sided printed curve flags (115gsm knitted polyester)
- x2 Small water bases
- x1 Trestle table: 750mm (h) x 1830mm (w) x 750mm (d)
- x1 Full dye sublimation printed tablecloth (1780mm x 2780mm)
- Printed full colour on 600D polyester
- Waterproof and flame retardant
- 12-month gazebo frame warranty

2 X 2	3 X 4.5
Code: RGULT2X2	Code: RGULT3X45
3 X 3	3 X 6
Code: RGULT3X3	Code: RGULT3X6



Carry bag included.

GAZEBO STOCK CANOPY & WALLS



RHINO



If you need a quick and basic 3m x 3m Gazebo, we also offer plain canopy and walls.

PLAIN BLACK CANOPY Code: G-RG3X3CANBLACK	PLAIN BLUE CANOPY Code: G-RG3X3CANBLUE
PLAIN RED CANOPY Code: G-RG3X3CANRED	PLAIN WHITE CANOPY Code: G-RG3X3CANWHITE
PLAIN BLACK FULL WALLS Code: G-RG3X3WALLBLACK	PLAIN BLUE FULL WALLS Code: G-RG3X3WALLBLUE
PLAIN RED FULL WALLS Code: G-RG3X3WALLRED	PLAIN WHITE FULL WALLS Code: G-RG3X3WALLWHITE



Need the basics?



If you're after our basic gazebo setup with plain walls and canopies, we offer a set range of colours below at affordable prices. **Get in touch with our sales team to find out more.**

GAZEBO PRINTED CANOPY & STOCK WALLS



RHINO



If you don't have the budget but still want to stand out from the crowd, go with our cost-effective solution with a printed canopy and plain stock walls.

PRINTED CANOPY Code: G-RG3X3CAN	PLAIN BLUE FULL WALLS Code: G-RG3X3WALLBLUE
PLAIN BLACK FULL WALLS Code: G-RG3X3WALLBLACK	PLAIN WHITE FULL WALLS Code: G-RG3X3WALLWHITE
PLAIN RED FULL WALLS Code: G-RG3X3WALLRED	



Need the basics?



If you're after our basic gazebo setup with plain walls and canopies, we offer a set range of colours below at affordable prices. **Get in touch with our sales team to find out more.**

GAZEBO

ACCESSORIES

8.5KG GAZEBO LEG WEIGHT

- Pack of 2

Concrete weight coated in plastic. We recommend a minimum of 4 leg weights per gazebo & 6 leg weights for the 3m x 6m.



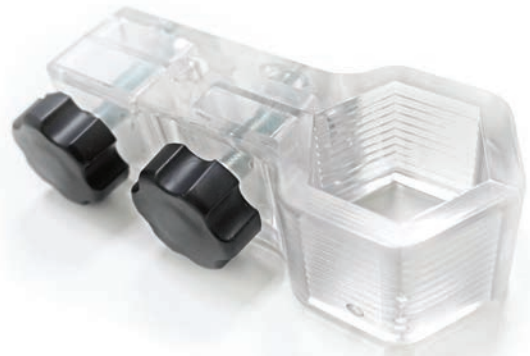
GAZEBO LEG WEIGHT

Code: **GLW85**

HALF-WALL BAR & CONNECTORS

- x 1 Half-wall bar and x2 connectors

This connects the telescopic half-wall bar to the gazebo leg securely.



3M HALF WALL BAR

Code: **GAZHWP3**

4.5M HALF WALL BAR

Code: **GAZHWP45**

HALF WALL BRACKET

Code: **GAZHWPCL**

GAZEBO FLAG FIXING BRACKET

- Pack of 2

Use this flag fixing bracket to attach the flags onto the gazebo. Simply push the flagpole over the spindle and connect the clamp to the gazebo leg.



GAZEBO FLAG BRACKET

Code: **GAZFC**

GROUND PEGS & GUIDE ROPES

Use ground pegs and guide ropes to securely attach the gazebo to the ground.



GAZEBO GROUND PEGS

Code: **GAZGPEG**

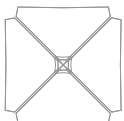
PRINTED COMMERCIAL PREMIUM PARASOL



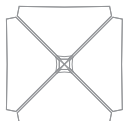
When the sun is shining and people are out and about, a parasol is an essential advertising item. They provide much needed shade so people can relax, and are a great marketing opportunity.

The parasol canopy is printed on 300D polyester, which is both water resistant and fire rated. We print full colour as standard to one side, so any design is possible

- Commercial quality parasol, perfect for hotels, beer gardens and cafés
- Heavy duty build with a sturdy 38mm aluminium pole
- Rope & pulley system for raising the canopy
- Available in circular or square shape
- Assembled height is 2000mm
- 1-year warranty on hardware



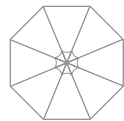
1.8m - 4 Panels



2m - 4 Panels



2.3m - 6 Panels



2.7m - 8 Panels



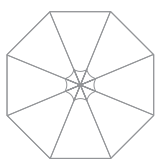
CODE	DESCRIPTION
CPP18SQ	1.8m x 1.8m Square Parasol
CPP2SQ	2m x 2m Square Parasol
CPP23CR	2.3 Diameter Circular Parasol
CPP27CR	2.7 Diameter Circular Parasol
PB22	22kg Base with Handles

PRINTED PROMO VALUE PARASOL



Our budget friendly Value Parasol is a great solution to provide shade especially on hot sunny days. Not only is this a practical product but it is also a great marketing opportunity. The parasol canopy is printed on 300D polyester, which is both water resistant and fire rated.

- Cost effective solution for outdoor events
- 25mm diameter white plastic-coated aluminium pole
- Available in circular shape
- Assembled height is 2000mm
- 1-year warranty on hardware



1.8m - 8 Panels



CODE	DESCRIPTION
PVP18CR	1.8m Diameter Circular
PB15	15kg Base

Check out our

CUSTOM PRINTED

STAR TENTS



OUR STAR TENTS ARE GREAT FOR CREATING AN UNMISSABLE OUTDOOR DISPLAY. THE DISTINCTIVE SHAPE AND LARGE SIZE WILL NATURALLY DRAW THE EYE TO THIS IMPRESSIVE STRUCTURE.

The weatherproof canopy provides shelter for both sunny and rainy weather. Star Tents consists of a 76mm diameter aluminium pole or two depending on size, with a full colour 600D polyester printed canopy. We provide galvanized steel pegs, rubber mallet and a wheeled carry bag so you're all set and ready to go.

PRINTED STAR TENT



The Star Tent is great for a range of events such as festivals, fairs, sports shows, garden parties and many more. Our Star Tent is available in six different sizes so you can choose to your requirements.

- Available in six different sizes
- x1 Full colour single sided printed canopy
- x1 Pole kit
- x1 Wheeled canvas bag
- x1 Rubber mallet
- Galvanised steel pegs and guide ropes included
- Printed on 600D polyester
- Weather resistant and fire retardant
- 1-year warranty on hardware



CODE	DESCRIPTION
STAR3X3	6m Diameter x 4m High
STAR4X4	8m Diameter x 4m High
STAR5X5	10m Diameter x 5m High
STAR6X6	12m Diameter x 5m High
STAR7X7	14m Diameter x 6m High
STAR8X8	15m Diameter x 6m High

PRINTED STAR TENT WITH 2 POLES



The large size allows you to increase your advertising reach and noticeability. With its side openings, it creates a welcoming atmosphere and room for plenty of attendees.

- x1 Full colour single sided printed canopy
- x2 Pole kit
- x1 Wheeled canvas bag
- x1 Rubber mallet
- Galvanised steel pegs and guide ropes included
- Printed on 600D polyester
- Weather resistant and fire retardant
- 1-year warranty on hardware



CODE	DESCRIPTION
STAR-T6X9	6m x 9m x 4m High
STAR-T8X12	8m x 12m x 4m High
STAR-T10X14	10m x 14m x 5m High
STAR-T12X17	12m x 17m x 5m High
STAR-T14X19	14m x 19m x 6m High
STAR-T16X21	16m x 21m x 6m High

Check out our

CUSTOM PRINTED

INFLATABLE TENTS



THE RHINO INFLATABLE TENT IS A STURDY AND ATTRACTIVE OPTION FOR OUTDOOR DISPLAYS.

Create shade and shelter for a registration desk, refreshment area or meeting point that fully shows off your brand. As one of the largest products in the range, there is plenty of print area on the canopy and backwalls (optional extra) for brand messaging. The backwalls zip in, so can be changed for a different message from the canopy if you wish. The Rhino Inflatable Tent uses trapped air technology: silent and free-standing once inflated.

INFLATABLE TENT



Use our Rhino inflatable tent to create an unforgettable stunning attraction. This portable dome-shaped tent makes you stand out and increase your brand awareness simultaneously.

- Available in four different sizes
- Single sided full colour print
- Printed on 600D polyester
- Water resistant and fire rated
- Ground pegs and guide ropes are included
- Supplied with an electric pump
- Printed side walls are available upon request
- 1-year warranty on hardware

CODE	TENT & PRINTED CANOPY
IFT-33	3m x 3m
IFT-44	4m x 4m
IFT-55	5m x 5m
IFT-66	6m x 6m

CODE	REPLACEMENT CANOPY
G-IFTC-33	3m x 3m
G-IFTC-44	4m x 4m
G-IFTC-55	5m x 5m
G-IFTC-66	6m x 6m



INFLATABLE TENT OPTIONAL SIDE WALLS



We expertly print onto the 600D polyester via dye-sublimation fabric printing for a photo quality print. You can also have printed side walls which are available upon request.

- Single sided full colour print
- Printed on 600D polyester
- Water resistant and fire rated
- Ground pegs and guide ropes are included
- Supplied with an electric pump
- 1-year warranty on hardware

CODE	OPTIONAL SIDE WALLS
G-IFTW-33	3m x 3m
G-IFTW-44	4m x 4m
G-IFTW-55	5m x 5m
G-IFTW-66	6m x 6m



POP OUT BANNERS



Our pop out banners will ensure maximum exposure of your brand, logo or message with minimum fuss. They're a great outdoor banner, perfect for sports days and charity golf events. They have a flexible frame that quickly pops into shape when you remove it from the carry bag.

Our pop out banners are available in two shapes and a range of sizes that are printed in full colour to both sides. All banners are supplied with a carry bag for easy transport and a set of ground pegs.



OVAL POP OUT BANNER

1400MM X 700MM Code: POBO1400	2000MM X 1000MM Code: POBO2000
2900MM X 1500MM Code: POBO2900	

CIRCULAR POP OUT BANNER

750MM DIAMETER Code: POBC750	1000MM DIAMETER Code: POBC1000
1200MM DIAMETER Code: POBC1200	

TEE-MARKER POP OUT BANNER

400MM X 200MM Code: POBO402

MONSOON BANNER FRAME



The Monsoon Banner Frame is a lightweight solution that is suitable for both indoor and outdoor use. They are great for sporting events and outdoor advertising, as the PVC banner material that we use is weatherproof. We offer both single sided and double sided options.

The frame is easy to assemble, no tools are required, and simply pushes together. We supply elasticated bungee cords so that you can easily attach the PVC banner to the frame.

- Full colour graphics included
- Suitable for indoor and outdoor use
- Choose from three sizes
- Square aluminium tubes with reinforced plastic mouldings
- Easy push-fit assembly- no tools required
- Supplied with carry bag and packs flats for easy transportation



SINGLE-SIDED MONSOON BANNER

	DESCRIPTION
MBF1500SS	1500mm (w) x 1000mm (h)
MBF2500SS	2500mm (w) x 1000mm (h)
MBF3000SS	3000mm (w) x 1250mm (h)

DOUBLE-SIDED MONSOON BANNER

CODE	DESCRIPTION
MBF1500DS	1500mm (w) x 1000mm (h)
MBF2500DS	2500mm (w) x 1000mm (h)
MBF3000DS	3000mm (w) x 1250mm (h)

CUSTOM PRINTED DECK CHAIR



Our deckchairs are printed full colour and supplied assembled and ready to use. Perfect for your next outdoor event, festival or even a day at the beach.

- Folding hardwood frames
- Supplied fully assembled and ready to use
- Graphics printed on 260gsm outdoor material
- High quality printed canvas with full colour graphics
- Deck chair folded: 1320mm (l) x 560mm (w) x 40mm (h)
- Deck chair unfolded: 1000mm (l) x 520mm (w) x 790/1070mm (h)
- Giant deck chair folded: 2400mm (l) x 1460mm (w) x 100mm (h)
- Giant deck chair unfolded: 1760mm (l) x 1460mm (w) x 1880mm (h)
- Max weight 100kg (normal) 250kg (giant)

DECK CHAIR

Code: **DC2015**

GIANT DECK CHAIR

Code: **GDC01**



CUSTOM PRINTED DIRECTORS CHAIR



Personalise your own director's chair to add a touch of Hollywood. With full colour print as standard, any design is possible. The directors chair arrives ready to use with no assembly required at all and can also be folded for easy transportation and storage.

- Manufactured from FSC certified wood
- High quality dye-printed graphics on the seat and the back rest
- Removable washable covers
- Total hardware dimensions (approx.) 860mm x 510mm
- Printed area:
- Back rest: 500mm x 160mm
- Seat: 390mm x 440mm
- Max weight 100kg

DIRECTORS CHAIR

Code: **DC2016**

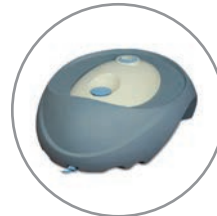
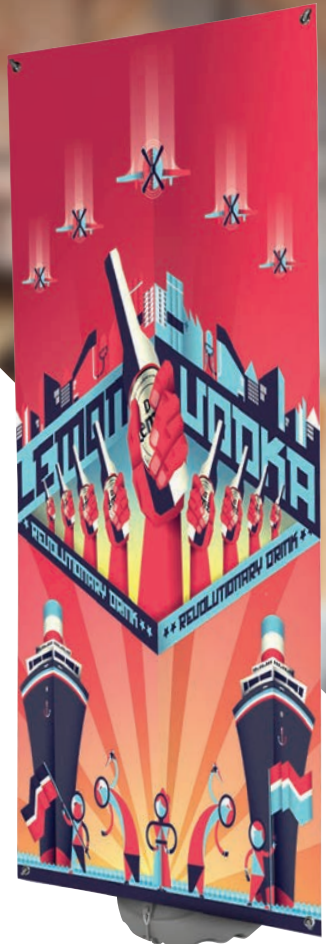


BLIZZARD BANNER

The Blizzard banner is ideal for all kinds of corporate, sporting and outdoor events. Its simple design makes it very easy to assemble on-site, and because it's adjustable, it can accommodate different graphic sizes to suit your application.

- Hollow plastic base for water or sand weighting agent
- Base holds 15 litres water approx
- Telescopic pole for adjustable height
- Weather resistant
- Optional carry bag
- Withstands winds up to 13-18mph approx
- PVC banner graphic
- Overall size: 800mm (w) x 2100mm (h)

800MM
Code: **BBS02**



Blizzard base.

EXPOVISION OUTDOOR ROLLER BANNER

The Expovision Outdoor Roller Banner is the only double-sided retractable outdoor banner. It's the ideal roller banner for outdoor use, being strong and durable yet very easy to assemble and transport.

- Assembled height: 2100mm
- For use in wind speeds between 18-24mph (pegged into the ground)
- For use in wind speeds between 4-7mph (when un-pegged)
- Printed full colour and supplied with carry bag



850MM
Code: **EVOUT850**



Expovision Outdoor pole.



Expovision Outdoor base.



Expovision Outdoor base.

Check out our

CUSTOM PRINTED

CAFÉ BARRIERS



WHAT ARE CAFÉ BARRIERS?

Café barriers are a common sight on the high street and in retail environments. Most businesses use them to create a dining or drinking area, but they do have multiple uses. They're great to frame a hotel entrance or for theatres and cinemas to create attractive queuing systems. The graphics we produce are full colour and you can use café barriers both indoor and outdoors.

HOW DO THEY WORK?



Café barriers are made up of printed graphics, support rails, poles and bases. While they can seem complicated to put together, they are actually straight forward:

- Choose which rail width option you need from the three available
- This first section features a printed graphic, two support rails, two poles and two bases
- You then add on an additional section, which attaches to the first café barrier
- This additional section features a printed graphic, two support rails, one pole and one base
- Keep adding as many additional sections as you need, creating a run of connected café barriers
- By purchasing additional poles and bases, you can add gaps into the run of café barriers, creating walkthroughs



Why choose café barriers?

- Great for creating attractive public areas
- Can be used both indoor and outdoor
- Quick and easy to assemble
- You can add on extra banners as you need to

GRAPHIC SIZE

- 1000mm:** 850mm (w) x 825mm (h)
- 1500mm:** 1360mm (w) x 825mm (h)
- 2000mm:** 1850mm (w) x 825mm (h)

ASSEMBLED SIZE

- 1000mm:** 1400mm wide x 990mm high
- 1500mm:** 1900mm wide x 990mm high
- 2000mm:** 2400mm wide x 990mm high

Pole base is approx. 370mm in diameter

LATTE CAFÉ BARRIER KIT



- x1 Graphic
- x2 Rails
- x2 Posts and bases
- PVC or fabric material options
- Available in three sizes: 1m, 1.5m and 2m

1000MM SET	1500MM SET
Code: LCB1000SS	Code: LCB1500SS
Code: LCB1000DS	Code: LCB1500DS
2000MM SET	
Code: LCB2000SS	
Code: LCB2000DS	

SS Single Sided **DS** Double Sided



CHAI

CAFÉ BARRIER KIT



- x2 Graphics
- x4 Rails
- x3 Posts and bases
- PVC or fabric material options
- Available in three sizes:
1m, 1.5m and 2m

1000MM SET
Code: **CHCB1000SS**
Code: **CHCB1000DS**

1500MM SET
Code: **CHCB1500SS**
Code: **CHCB1500DS**

2000MM SET
Code: **CHCB2000SS**
Code: **CHCB2000DS**

SS Single Sided **DS** Double Sided



FRAPPÉ

CAFÉ BARRIER KIT



- x3 Graphics
- x6 Rails
- x4 Posts and bases
- PVC or fabric material options
- Available in three sizes:
1m, 1.5m and 2m

1000MM SET
Code: **FCB1000SS**
Code: **FCB1000DS**

1500MM SET
Code: **FCB1500SS**
Code: **FCB1500DS**

2000MM SET
Code: **FCB2000SS**
Code: **FCB2000DS**

SS Single Sided **DS** Double Sided



MACCHIATO

CAFÉ BARRIER KIT



- x4 Graphics
- x8 Rails
- x5 Posts and bases
- PVC or fabric material options
- Available in three sizes:
1m, 1.5m and 2m

1000MM SET
Code: **MCB1000SS**
Code: **MCB1000DS**

1500MM SET
Code: **MCB1500SS**
Code: **MCB1500DS**

2000MM SET
Code: **MCB2000SS**
Code: **MCB2000DS**



SS Single Sided **DS** Double Sided

BISTRO

CAFÉ BARRIER KIT



- x1 Graphic
- x2 Rails
- x2 Posts and bases
- PVC or fabric material options
- Available in three sizes:
1m, 1.5m and 2m

1000MM SET
Code: **BCB1000SS**
Code: **BCB1000DS**

1500MM SET
Code: **BCB1500SS**
Code: **BCB1500DS**

2000MM SET
Code: **BCB2000SS**
Code: **BCB2000DS**



SS Single Sided **DS** Double Sided

MOCHA

CAFÉ BARRIER KIT



- x2 Graphics
- x4 Rails
- x3 Posts and bases
- PVC or fabric material options
- Available in three sizes:
1m, 1.5m and 2m

1000MM SET

Code: **MOCB1000SS**

Code: **MOCB1000DS**

1500MM SET

Code: **MOCB1500SS**

Code: **MOCB1500DS**

2000MM SET

Code: **MOCB2000SS**

Code: **MOCB2000DS**

SS Single Sided **DS** Double Sided



ESPRESSO

CAFÉ BARRIER KIT



- x3 Graphics
- x6 Rails
- x4 Posts and bases
- PVC or fabric material options
- Available in three sizes:
1m, 1.5m and 2m

1000MM SET

Code: **ECB1000SS**

Code: **ECB1000DS**

1500MM SET

Code: **ECB1500SS**

Code: **ECB1500DS**

2000MM SET

Code: **ECB2000SS**

Code: **ECB2000DS**

SS Single Sided **DS** Double Sided



CORTADO

CAFÉ BARRIER KIT



- x4 Graphics
- x8 Rails
- x5 Posts and bases
- PVC or fabric material options
- Available in three sizes:
1m, 1.5m and 2m

1000MM SET
Code: COCB1000SS
Code: COCB1000DS
1500MM SET
Code: COCB1500SS
Code: COCB1500DS
2000MM SET
Code: COCB2000SS
Code: COCB2000DS



SS Single Sided **DS** Double Sided

EXTENSION

CAFÉ BARRIER KIT



- x1 Graphic
- x2 Rails
- x1 Post and base
- PVC or fabric material options
- Available in three sizes: 1m, 1.5m and 2m

AVAILABLE IN SILVER OR BLACK

1000MM SET	1500MM SET
Code: EXCB1000SS-S/B	Code: EXCB1500SS-S/B
Code: EXCB1000DS-S/B	Code: EXCB1500DS-S/B
2000MM SET	
Code: EXCB2000SS-S/B	
Code: EXCB2000DS-S/B	



SS Single Sided **DS** Double Sided **S** Silver **B** Black

Bespoke packages

Enquire about our bespoke packages that are available in various sizes and with single or double-sided print.

Check out our

CUSTOM PRINTED

PAVEMENT SIGNS



WHAT ARE PAVEMENT SIGNS?

Pavement signs are the perfect advertising tool to be used on the high street and in high footfall locations. They are a simple yet effective way to promote your business, brand, or service.

We have a range of pavement signs to offer in a variety of sizes. They also have a quick and easy assembly with no tools required.

ECOFLEX LITE

Our Ecoflex Lite offers a simple robust solution for outdoor advertising. It may be the smallest from the range but be assured that it is just as effective.

- Panel size 410mm (w) x 795mm (h)
- 0.9mm aluminium panel
- Full colour print on vinyl
- Unique patented wedge for assembly and disassembly in seconds
- Recycled PVC base provides low centre of gravity and high stability
- Wind tested up to 60mph
- 1-year warranty on hardware



WITH GRAPHICS

Code: **EFL-01G**



ECOFLEX EXTRA

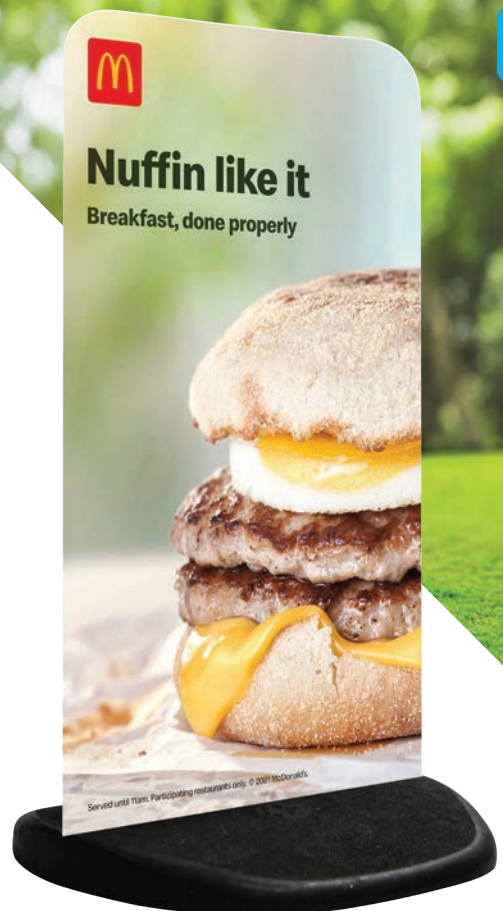
Our largest size in the range is designed for long range visibility and to grab attention. The perfect outdoor solution for promoting your message and increasing noticeability.

- Panel size 540mm (w) x 952mm (h)
- 1.2mm aluminium panel
- Full colour print on vinyl
- Unique patented wedge for assembly and disassembly in seconds
- Recycled PVC base provides low centre of gravity and high stability
- Wind tested up to 60mph
- 1-year warranty on hardware



WITH GRAPHICS

Code: **EFEK-01G**



ECOFLEX STANDARD

Great for high footfall areas, use the Ecoflex Standard to promote your business or campaign. This product offers a double-sided full colour print as standard, so the design possibilities are endless.

- Panel size 460mm (w) x 850mm (h)
- 1.2mm aluminium panel
- Full colour print on vinyl
- Unique patented wedge for assembly and disassembly in seconds
- Recycled PVC base provides low centre of gravity and high stability
- Wind tested up to 60mph
- 1-year warranty on hardware



WITH GRAPHICS

Code: **EFS-01G**



ECO SWINGER

Use the Eco Swinger for a simple yet effective advertising tool. Ideal for areas with high footfall, this pavement sign is sure to get noticed and increase your brand awareness.

- Display area of 430mm (w) x 625mm (h)
- 1.2mm aluminium panel
- Full colour double sided print
- 32mm round steel tube with anti-shock 'D-flex' panel hangers
- Black or white frame available
- Solid black recycled PVC base for stability
- Tool free assembly
- 1-year warranty on hardware



WITH GRAPHICS

Code: **ESWG**



SWINGER 2

PAVEMENT SIGN

Utilise the Swinger 2 for an impressive outdoor display which will increase your noticeability and boost your message.

- Display area of 500mm (w) x 750mm (h)
- 1.2mm aluminium panel
- Full colour double sided print
- 32mm round steel tube with anti-shock 'D-flex' panel hangers
- Black or white frame available
- Solid black recycled PVC base for stability
- Tool free assembly
- 1-year warranty on hardware



WITH GRAPHICS

Code: **ES2WG**



SWINGER 3000

PAVEMENT SIGN

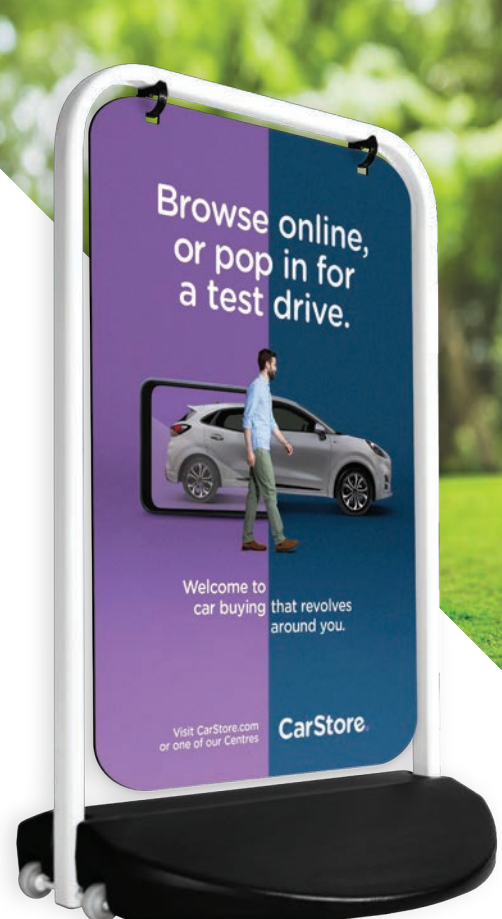
Use the Swinger 3000, the largest in our range to maximise your visual reach. It is the perfect tool for high street and high footfall location to promote your business, brand, or service.

- Display area of 588mm (w) x 917mm (h)
- 1.2mm aluminium panel
- Full colour double sided print
- 32mm round steel tube with anti-shock 'D-flex' panel hangers
- Black or white frame available
- Polyethylene water fillable wheeled base for stability
- Tool free assembly
- 1-year warranty on hardware



WITH GRAPHICS

Code: **ES3WG**



RHINO A-BOARD

Our Rhino A-Board is the perfect solution for a quick and easy outdoor marketing solution. It is sturdy and folds flat allowing for easy transportation and storage. With double-sided full colour graphics, you can maximise your advertising reach.

- Available in two sizes
- Black / silver frame
- 32mm snap frames with rounded corners for safety
- Double sided full colour graphics
- Anti-glare poster covers to protect graphics
- Galvanised steel back panels and hinged locking arms for optimum weight and stability
- 1-year warranty on hardware



WITH GRAPHICS A2

Code: **RABA2G**

WITH GRAPHICS A1

Code: **RABA1G**



VISION SITE-MASTER PAVEMENT SIGN

The Vision Site Master board has heavy duty spring mounts allowing for panel deflection in the wind and improving its stability. It also has a rigid "kick proof" back panel increasing its durability and stability so it's great for outdoor advertising.

- Silver anodised frames with rounded corners for safety
- Anti-glare PET poster covers
- Water fillable plastic base with in-built wheels and carry handles
- Quick tool free assembly
- Withstands windspeeds up to 18mph
- 1-year warranty on hardware



WITH GRAPHICS A2

Code: **VSMA2G**

WITH GRAPHICS A1

Code: **VSMA1G**

WITH GRAPHICS A0

Code: **VSMA0G**





DID YOU KNOW...

We are specialists in the following...

We facilitate customers of all sizes and provide a tailored end-to end print management service with exceptional results. Our ethos and culture are developed around a family business model and maintaining close relationships with our customers is the key to our continued success.

- A** A Boards
Acrylic Displays
Acrylic Printing
Appointment Cards
Atlas Ad Flags
Automatic Counters
Aluminium Poster Stands

- B** Backpack Flags
Bannerbow Systems
Banners
Barrier Jackets
Beanbags
Beer Mats
Bespoke Printing
Bollard Wraps
Booklets
Brochures
Budget A-boards
Bunting
Business Stationery
Business Cards

- C** Cable Systems
Café Barriers
Calendars
Cardboard Display Triangles
Chalkboards
Character Standees
Christmas Cards
Correx Boards
Crowd Barrier Jackets
Cube Seats
Cushions
Custom Flags
Calendars
Canvas Prints

- D** Deck Chairs
Desk Pads
Desktop Flags
Desktop Roller Banners
Dibond Boards
Digital Advertising Displays
Digital Booklets
Directors Chairs
Double-sided Roller Banners
Drum Fabric Displays
Dry Wipe Boards

- E** Eco-friendly
Estate Agent Boards
Exhibition Stands
Expovision Roller Banners

- F** Fabric Super Lightweight System
Feather Flags
Fence Scrim
Finesse Demo Counters
Floor Graphics
Flyers
Foamex Boards
Foil Printing
Folding Panel Kits
Forecourt Flags
Free-standing Cardboard Totem Displays
Free-standing Display Units
Free-standing Lightboxes
Floor Tape

- G** Gazebos
Giant Rhino Portable Flags
Glass Printing
Greeting Cards
Giant Cheques
Green Screen Banners

- H** Handwaving Flags
Hanging Banners
Hanging Displays
Heras Fencing
Hand Clappers

- I** Inflatable Tents
Information Stands
Interior Graphics
Invitations
iPad Holders

- J** Junior Folding Panel Kits

- K** Keder Fabric
Knitted Polyester
Kraft Business Cards

- L** Labels
Large-format Posters
Leaflet Dispensers
Leaflets
LED Lightboxes
LED Lights
Letterheads
Life-size Standees
Literature Stands
Litho Printing
Logo Mats

- M** Magnetic Boards
Magnetic Free-standing Frames
Media Walls
Meeting Pods
Menus
Merchandising Displays
Monsoon Banners
Magnetic Signs
Mesh Banners

- N** NCR Pads
Newsletters
Note Pads
Notebooks
Noticeboards

- O** Outdoor Banners
Outdoor Displays

- P** Parasols
Pitch Graphics
Podium Stands
Pop-out Banners
Pop-up Counters
Pop-up Display Kits
POS Stacking Display Cubes
Postcards
Posters
Perfect Bound Booklets
Presentation Folders
Printed Doors
Printed Paddles
Promo Counters
Promo Spin-the-Wheel
Promotional Products
PVC Banners

- Q** Quick Pop-up Bundles
Quick Tower Pop-ups

- R** Receipt Books
Rectangle Flags
Replacement Cassette Banners
Retail Signs
RSVP Cards
Recycled Range

- S** SEG Fabric Counters
SEG Fabric Pop-up Stands
SEG Pop-up Fabric Counters
Selfie Frames
Selfie Props
Shell Scheme Graphics
Snap Frames
Soft Touch Banner Stands
Soft Touch Drum Fabric Displays
Soft Touch Fabric Counters
Soft Touch Fabric Displays
Soft Touch iPad Stands
Soft Touch Meeting Pods
Soft Touch Snake Stands
Solus Demo Counters
Stadium Pitch Banners
Star Tents
Stickers
Stretch Tablecloths
Strut Cards

- T** Tablecloths
Tableplans
Teardrop Flags
Tension Fabric Systems
Trestle Tables
Twist Display Systems
Table Talkers

- U** Unbranded Samples

- V** Vinyl Banners
Vision Print Mats
Vision Site Master A-boards
Vortex Tension Banners

- W** Wall Graphics
Wall Mount Tension Fabric Systems
Wall Planners
Wallpaper Printing
Wedding Stationery
Wedge Rigid Banner Stands
White Boards
Wide Roller Banners
Windance Flags
Window Vinyl
Wood Printing
Wrapping Paper

- X** Xclaim Pop Up Stands

- Y** Yearly Wall Planners

- Z** Zed Up Literature Stands
Zenith Cases

Plus much more!



When you need a bespoke product or a custom-made solution, can help.

Thanks to our international network of manufacturers, we're able to assist with any query that you may have. We have the buying power, the contacts and the expertise to manage your project from start to finish, ensuring that we deliver your custom goods exactly as requested and on time.

We can assist with custom produced promotional material, interior and exterior graphics, modular exhibitions, CNC shape cutting, 3D printing, oversize digital printing and we have the ability to supply in a variety of materials including wood, aluminium, plastic, cardboard and polystyrene. If you have any queries that you'd like to discuss, or would like to find out a little more about this service, please don't hesitate to contact us.



FABRICATED PRODUCTS



CUSTOM SIGNAGE



BESPOKE EVENT DISPLAYS



CUSTOM FABRIC PRODUCTS



LED LIGHTBOXES & COUNTERS



FABRIC POS



ENVIROVISION



SWITCH MATERIALS TO HELP SAVE THE ENVIRONMENT

RECYCLED FABRIC

- This range of display materials are made from 100% recycled yarn, removed from the world's oceans
- All the materials are certified by the Global Recycle Standard
- Each tonne of waste that is used reduces CO2 emissions and saves 3.8 barrels of oil
- These materials are produced using 100% clean natural gas, reducing the emission of sulphur dioxide (SO2) to almost zero
- The low nitrogen combustion technique utilised during manufacture reduces nitrogen emissions by almost 60%

PVC-FREE ROLLER BANNER MATERIAL

- A revolutionary, 100% PVC-free material that is fully recyclable
- A greener, safer alternative without sacrificing quality or durability
- This material does not contain heavy metals or plasticisers, which are harmful to the environment
- A lightweight material that helps to decrease CO2 emissions by reducing transportation costs
- Despite its popularity, PVC is hard to dispose of; it can't be incinerated due to its toxic nature when heated
- If taken to a landfill, the PVC can start to decompose and the toxic components leach into the soil and surroundings



**LOOK OUT FOR THIS LOGO TO SEE WHICH PRODUCTS OFFER OUR
ECO-FRIENDLY ALTERNATIVE**

115GSM KNITTED POLYESTER



TABLECLOTH



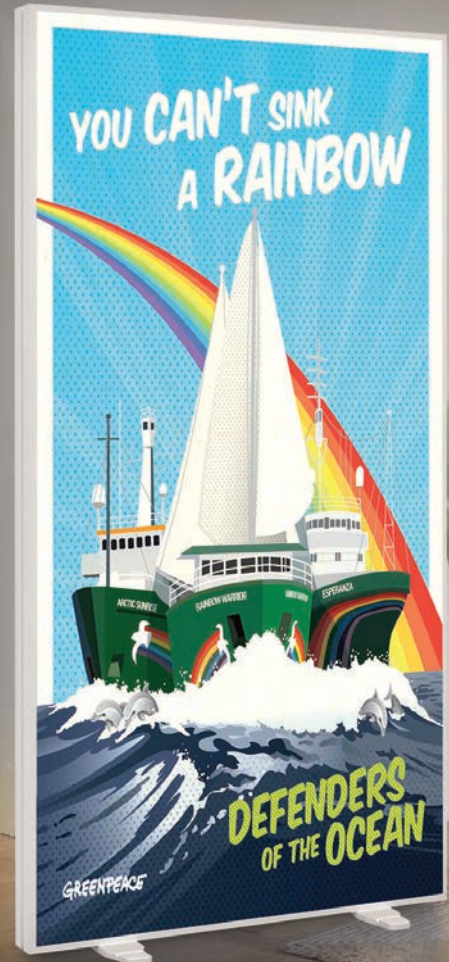
PVC-FREE POLYESTER MESH



PVC-FREE BANNERS



BACKLIT MATERIAL



Check out our

CUSTOM PRINTED

EXHIBITION & DISPLAY PRODUCTS



VIEW OUR RANGE OF EXHIBITION & DISPLAY PRODUCTS THAT ARE PERFECT FOR ANY INDOOR EVENT OR ENVIRONMENT.

Whether it's for an exhibition, retail environment, or an open day, we have a variety of display solutions that are fit for many purposes. We expertly print onto fabric for a photographic quality print which will leave a lasting impression to all.

If you have any questions or require information, please contact our sales team for more information.

Check out our

CUSTOM PRINTED

FABRIC DISPLAYS



WHAT ARE SOFT TOUCH FABRIC DISPLAYS?

Our Soft Touch fabric displays are lightweight and easy to assemble. The frame is made up of 32mm aluminium tubing that easily push-fits together to form a strong frame. Each piece of the tube frame is helpfully labelled at both ends; just match the numbers together and connect the tubes.

Once the aluminium frame has been assembled, the one piece stretch fabric sock slides over the frame, zips up and creates a tensioned fabric display stand with seamless graphics. All Soft Touch products are supplied with a carry bag for easy transportation.

850MM SOFT TOUCH STRAIGHT FABRIC DISPLAY

Simple yet effective display to showcase any brand or campaign in any indoor environment.

- 850mm (w) x 2320mm (h) x 450mm (d)
- 32mm aluminium tubing with stabilising feet
- Easy push fit assembly
- Fabric sock with zip fastening
- Double sided full colour print on 210gsm stretch display polyester
- Carry bag supplied
- 1-year warranty on hardware



850MM STRAIGHT
Code: **STS850**

*Please note that hardware size could vary.



Carry bag included.



1M SOFT TOUCH STRAIGHT FABRIC DISPLAY

A quick and easy advertising solution for any event. You only need 5 minutes to assemble this product with minimal effort required.

- 1000mm (w) x 2320mm (h) x 450mm (d)
- 32mm aluminium tubing with stabilising feet
- Easy push fit assembly
- Fabric sock with zip fastening
- Double sided full colour print on 210gsm stretch display polyester
- Carry bag supplied
- 1-year warranty on hardware

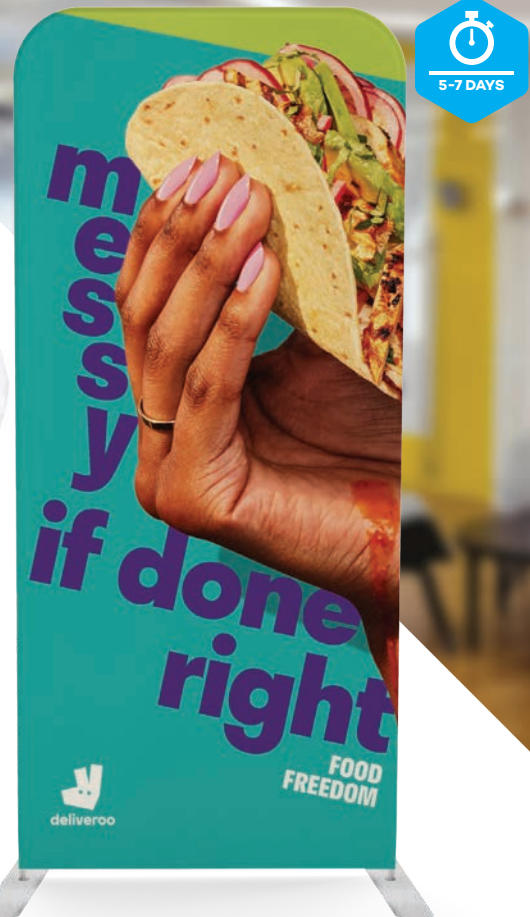


1M STRAIGHT
Code: **STS1**

*Please note that hardware size could vary.



Carry bag included.



2M SOFT TOUCH STRAIGHT FABRIC DISPLAY



A great solution for a creaseless and seamless fabric display. These graphic socks are carefully stitched by our in-house sewing department to ensure it is a perfect fit.

- 2000mm (w) x 2320mm (h) x 450mm (d)
- 32mm aluminium tubing with stabilising feet
- Easy push fit assembly
- Fabric sock with zip fastening
- Double sided full colour print on 210gsm stretch display polyester
- Carry bag supplied
- 1-year warranty on hardware

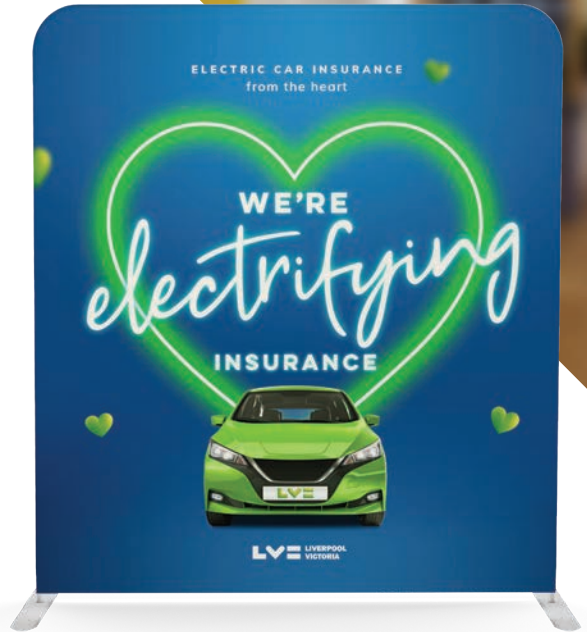


2M STRAIGHT
Code: **STS2**



Carry bag included.

*Please note that hardware size could vary.



2.4M SOFT TOUCH STRAIGHT FABRIC DISPLAY



Our 2.4m wide Soft Touch fabric display will provide you with a large print area for creating a media wall or photo backdrop.

- 2350mm (w) x 2320mm (h) x 450mm (d)
- 32mm aluminium tubing with stabilising feet
- Easy push fit assembly
- Fabric sock with zip fastening
- Double sided full colour print on 210gsm stretch display polyester
- Carry bag supplied
- 1-year warranty on hardware



2.4M STRAIGHT
Code: **STS24**

*Please note that hardware size could vary.



3M SOFT TOUCH STRAIGHT FABRIC DISPLAY



A great portable fabric display solution for any exhibition or event that is supplied with a carry bag for ease of transport and storage.

- 2950mm (w) x 2320mm (h) x 450mm (d)
- 32mm aluminium tubing with stabilising feet
- Easy push fit assembly
- Fabric sock with zip fastening
- Double sided full colour print on 210gsm stretch display polyester
- Carry bag supplied
- 1-year warranty on hardware



3M STRAIGHT
Code: **STS3**

*Please note that hardware size could vary.



Carry bag included.



4M SOFT TOUCH STRAIGHT FABRIC DISPLAY



Total hardware dimensions (approx)*

- 3950mm (w) x 2320mm (h) x 450mm (d)



4M STRAIGHT
Code: **STS4**

*Please note that hardware size could vary.



Carry bag included.



5M SOFT TOUCH STRAIGHT FABRIC DISPLAY



If you're looking for a wider display, utilise our 5m wide Soft Touch Display for a large print area. Perfect for any backdrop or media wall in any indoor environment.

Total hardware dimensions (approx)*

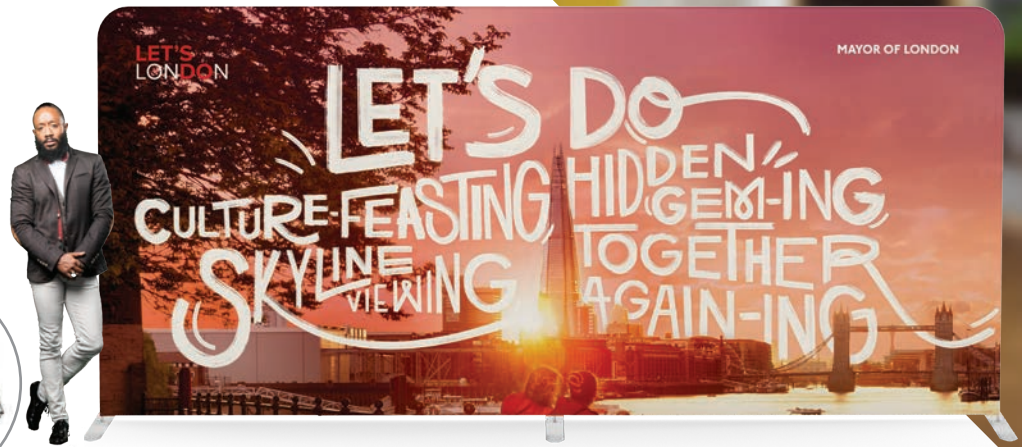
- 4950mm (w) x 2320mm (h) x 450mm (d)



5M STRAIGHT
Code: **STS5**



Carry bag included.



*Please note that hardware size could vary.

6M SOFT TOUCH STRAIGHT FABRIC DISPLAY



Total hardware dimensions (approx)*

- 5950mm (w) x 2320mm (h) x 450mm (d)



6M STRAIGHT
Code: **STS6**



Carry bag included.



*Please note that hardware size could vary.

2.4M SOFT TOUCH CURVE FABRIC DISPLAY



Perfect for creating media walls and photo backdrops, our 2.4m Soft Touch curved fabric display is versatile in its uses.

- 2350mm (w) x 2280mm (h) x 450mm (d)
- 32mm aluminium tubing
- Easy push fit assembly
- Fabric sock with zip fastening
- Double sided full colour print on 210gsm stretch display polyester
- Carry bag supplied
- 1-year warranty on hardware



2.4M CURVE
Code: **STC24**



Carry bag included.

*Please note that hardware size could vary.



3M SOFT TOUCH CURVE FABRIC DISPLAY



These fabric displays can be reused as many times as you require as they are machine washable so they can stay fresh and clean. Alternatively you can simply replace the graphic ready for your next event.

- 2950mm (w) x 2280mm (h) x 600mm (d)
- 32mm aluminium tubing
- Easy push fit assembly
- Fabric sock with zip fastening
- Double sided full colour print on 210gsm stretch display polyester
- Carry bag supplied
- 1-year warranty on hardware

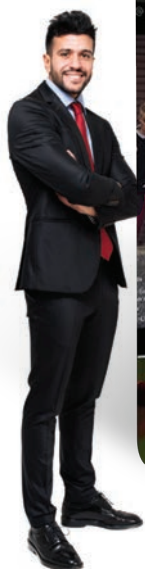


3M CURVE
Code: **STC3**



Carry bag included.

*Please note that hardware size could vary.



4M SOFT TOUCH CURVE FABRIC DISPLAY



Total hardware dimensions (approx)*

- 3950mm (w) x 2280mm (h) x 800mm (d)



4M CURVE
Code: **STC4**

*Please note that hardware size could vary.



Carry bag included.



5M SOFT TOUCH CURVE FABRIC DISPLAY



Total hardware dimensions (approx)*

- 4950mm (w) x 2280mm (h) x 1000mm (d)



5M CURVE
Code: **STC5**

*Please note that hardware size could vary.



Carry bag included.



6M SOFT TOUCH CURVE FABRIC DISPLAY



Total hardware dimensions (approx)*

- 5950mm (w) x 2280mm (h) x 841mm (d)



6M CURVE
Code: **STC6**

*Please note that hardware size could vary.



Carry bag included.



SOFT TOUCH MONOLITH



These displays are guaranteed to grab attention. Available in a range of widths and seated on a heavy metal base, Soft Touch Monolith stands promote a strong brand image.

- Includes vibrant fabric print
- Fully washable graphic
- 32mm diameter aluminium tubular frame
- Heavy duty metal base
- One piece fabric graphic
- Printed on 210gsm stretch display polyester
- 1-year warranty on hardware



600MM X 2380MM Code: STB600	900MM X 2380MM Code: STB900
1200MM X 2380MM Code: STB1200	1500MM X 2380MM Code: STB1500



PEGASUS FABRIC TENSION BANNER



The Pegasus fabric tension banner is one of the largest tension banners within the range making it ideal for exhibition environments and backdrops for presentations and branding.

It is both height and width adjustable, making it flexible enough to fit a variety of venues. As it is extremely lightweight and breaks down to fit a small carry bag, it is very practical for portable display applications.

- Telescopic poles allow for adjustable heights and widths
- Ability to go to 2.4 metres wide. It can provide up to a 5.6 sqm print area
- Black powder coated aluminium finish
- Visual area H: 1120 – 2400 mm x W: 1330 – 2400mm with pole pockets for a seamless graphic
- Assembled size: H: 1000 – 2460 x W: 1430 – 2400 x D: 440mm
- Printed on 210gsm display polyester
- Comes complete with carry bag
- 1-year warranty on hardware



1500MM WIDE	2000MM WIDE
Code: PTB15-01	Code: PTB20-01
2400MM WIDE	
Code: PTB24-01	



Pegasus foot.



Pegasus height adjustment.

PEGASUS XL FABRIC TENSION BANNER



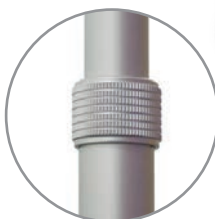
Use our extra-large Pegasus fabric tension banner for a larger print display. You can optimise this space to showcase whatever you desire in any exhibition or event, perfect for a backdrop.

- Telescopic poles allow for adjustable heights and widths
- Ability to go to 3 metres wide
- Large diameter aluminium poles for extra strength
- Chrome finish
- Visual area H: 1000 – 2520 x W:1330 – 3000mm with pole pockets for a seamless graphic
- Assembled size: H: 1120 – 2560 x W:1430 – 3040 x D: 440mm
- Ideal for branded back drops or striking durable signage
- Printed on 210gsm display polyester
- 5-year warranty on hardware

PEGASUS XL
Code: PTB30-01



Pegasus foot.



Pegasus height adjustment.

SOFT TOUCH FABRIC COUNTER



Our Soft Touch fabric counters are striking and unique. Part of the Soft Touch range, the oval counter and square counter have a base and top supported by aluminium poles. A tensioned fabric sock is attached using silicone edged material.

- Quick and simple to assemble
- Available in 2 shapes
- Vibrant, washable dye-sublimation printed included
- Packs into supplied bag for transport
- Additional prints can be purchased separately
- Printed on 210gsm stretch display polyester
- 1-year warranty on hardware

OVAL COUNTER
Assembled Size: 595mm (w) x 395mm (d) x 1010mm(h)
Code: STFCO

SQUARE COUNTER
Assembled Size: 800mm (w) x 530mm (d) x 1010mm(h)
Code: STFCS



OVAL COUNTER

SQUARE COUNTER

SOFT TOUCH FABRIC AUTOMATIC COUNTER



Our automatic counter is a fantastic option for trade shows and exhibitions. With just a simple press, the counter rises automatically on its concertina mechanism, eliminating the need for tools or screws.

- Ideal for trade shows and events
- Contemporary appearance
- Simple assembly
- No tools required
- The fabric graphic doesn't have to be removed to transport
- Supplied with a nylon carry bag
- Printed on 210gsm stretch display polyester
- 1-year warranty on hardware

OVAL COUNTER
Assembled Size: 600mm (w) x 350mm (d) x 1000mm(h)
Code: STAC01

SQUARE COUNTER
Assembled Size: 800mm (w) x 480mm (d) x 1000mm(h)
Code: STAC02



FOLDED FLAT

INTERNAL HARDWARE



SOFT TOUCH

EXHIBITION KIT 1



Create the space you need with these tube fabric walls. Have a simple yet effective exhibition kit for any event or exhibition. Portable and easy to assemble for a great looking stand. Re-use the hardware for multiple events and change the graphics to suit your needs.

- 1 x 2.4m Soft Touch Curve
- 1 x Soft Touch Fabric Oval Counter
- Full colour print on 210gsm stretch display polyester
- Carry bag included
- 1-year warranty on hardware



SOFT TOUCH KIT 1
Code: **STC24KIT**

*Please note that hardware size could vary.



SOFT TOUCH

EXHIBITION KIT 2



Create the space you need with these tube fabric walls. Have a simple yet effective exhibition kit for any event or exhibition. Portable and easy to assemble for a great looking stand. Re-use the hardware for multiple events and change the graphics to suit your needs.

- 1 x 3m Soft Touch Curve
- 1 x Soft Touch Fabric Square Counter
- Full colour print on 210gsm stretch display polyester
- Carry bag included
- 1-year warranty on hardware



SOFT TOUCH KIT 2
Code: **STC3KIT**

*Please note that hardware size could vary.



SOFT TOUCH

EXHIBITION KIT 3



Create the space you need with these modular tube fabric walls. Have a simple yet effective exhibition kit for any event or exhibition. Portable and easy to assemble for a great looking stand. Re-use the hardware for multiple events and change the graphics to suit your needs.

- 1 x 2.4m Soft Touch Straight
- 1 x Soft Touch Fabric Oval Counter
- Full colour print on 210gsm stretch display polyester
- Carry bag included
- 1-year warranty on hardware



SOFT TOUCH KIT 3
Code: **STS24KIT**

*Please note that hardware size could vary.



SOFT TOUCH

EXHIBITION KIT 4



Create the space you need with these modular tube fabric walls. Have a simple yet effective exhibition kit for any event or exhibition. Portable and easy to assemble for a great looking stand. Re-use the hardware for multiple events and change the graphics to suit your needs.

- 1 x 3m Soft Touch Straight
- 1 x Soft Touch Counter Square Counter
- Full colour print on 210gsm stretch display polyester
- Carry bag included
- 1-year warranty on hardware



SOFT TOUCH KIT 4
Code: **STS3KIT**

*Please note that hardware size could vary.

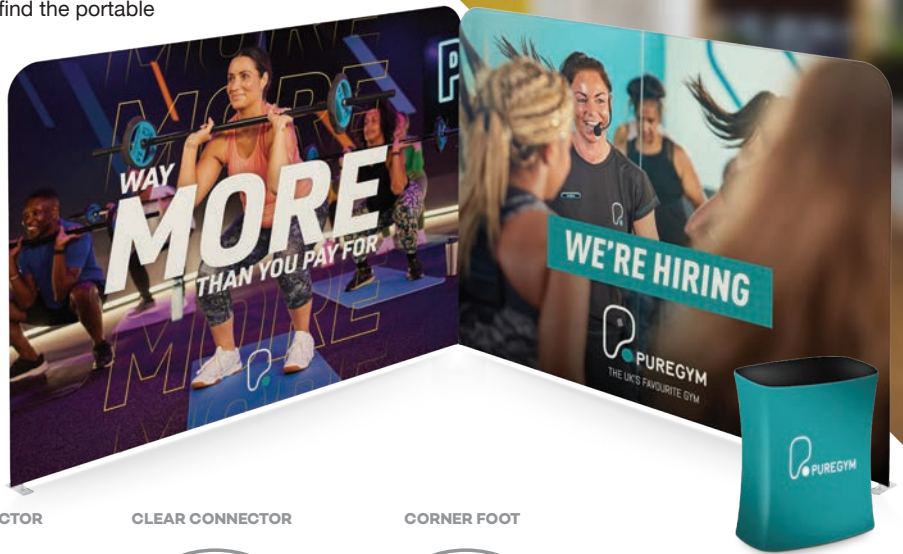


SOFT TOUCH EXHIBITION KIT 5



Whether you have a 2x1 stand or a 6x6 stand, we have a solution to fit. Use our multiple straight tube fabric walls and our connectors and feet to create multiple configurations for trade shows and events. Get in touch with our sales team with your requirements and let us find the portable display for you.

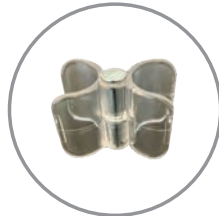
- 2 x 3m Soft Touch Straight
- 2 x Connectors
- 1 x Corner foot
- 1 x Soft Touch Fabric Square Counter
- Carry bags included
- 1-year warranty on hardware



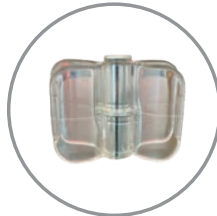
SOFT TOUCH KIT 5
Code: **STS3L3KIT**

*Please note that hardware size could vary.

CLEAR CONNECTOR



CLEAR CONNECTOR



CORNER FOOT



SOFT TOUCH EXHIBITION KIT 6



Whether you have a 2x1 stand or a 6x6 stand, we have a solution to fit. Use our multiple straight tube fabric walls and our connectors and feet to create multiple configurations for trade shows and events. Get in touch with our sales team with your requirements and let us find the portable display for you.

- 1 x 6m Soft Touch Straight
- 1 x 3m Soft Touch Straight
- 2 x Connectors
- 1 x Corner foot
- 1 x Soft Touch Fabric Square Counter
- Carry bags included
- 1-year warranty on hardware



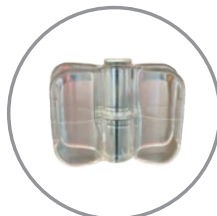
SOFT TOUCH KIT 6
Code: **STS6L3KIT**

*Please note that hardware size could vary.

CLEAR CONNECTOR



CLEAR CONNECTOR



CORNER FOOT



SOFT TOUCH HANGING CIRCULAR

Our circular hanging structure creates a stunning overhead display. Most popularly used in exhibition halls, retail and shopping centres for an eye-catching display that is unmissable.

- Aluminium tubing with push-fit assembly
- Double-sided graphic sock with zip fastening
- Full colour print on 210gsm stretch display polyester
- Single- or double-sided print available
- Machine washable and replaceable graphics
- Carry bag included
- 1-year warranty on hardware

1830MM W X 1830MM D X 508MM H Code: STHC-1818-SS	1830MM W X 1830MM D X 508MM H Code: STHC-1818-DS
3050MM W X 3050MM D X 610MM H Code: STHC-3030-SS	3050MM W X 3050MM D X 610MM H Code: STHC-3030-DS
4572MM W X 4572MM D X 1200MM H Code: STHC-4545-SS	4572MM W X 4572MM D X 1200MM H Code: STHC-4545-DS
6096MM W X 6096MM D X 1200MM H Code: STHC-6060-SS	6096MM W X 6096MM D X 1200MM H Code: STHC-6060-DS

SS Single Sided **DS** Double Sided



SOFT TOUCH HANGING RECTANGULAR

The rectangular hanging structure is great for creating a focal point to attract visitors from a distance. As it is lightweight and easy to assembly, this makes it great for any environment.

- Aluminium tubing with push-fit assembly
- Double-sided graphic sock with zip fastening
- Full colour print on 210gsm stretch display polyester
- Single- or double-sided print available
- Machine washable and replaceable graphics
- Carry bag included
- 1-year warranty on hardware

6000MM W X 3000MM D X 1200MM H Code: STHR-6030-SS	6000MM W X 3000MM D X 1200MM H Code: STHR-6030-DS
-------------------------------------------------------------	-------------------------------------------------------------

SS Single Sided **DS** Double Sided



SOFT TOUCH

HANGING TRIANGULAR

Triangular hanging displays are great for when you want to show off your brand or position in exhibition halls, showrooms or shopping centres.

- Aluminium tubing with push-fit assembly
- Double-sided graphic sock with zip fastening
- Full colour print on 210gsm stretch display polyester
- Single- or double-sided print available
- Machine washable and replaceable graphics
- Carry bag included
- 1-year warranty on hardware

3048MM W X 3048MM D X 1070MM H
Code: **STHT-3030-SS**

3048MM W X 3048MM D X 1070MM H
Code: **STHT-3030-DS**

4267MM W X 4267MM D X 1070MM H
Code: **STHT-4242-SS**

4267MM W X 4267MM D X 1070MM H
Code: **STHT-4242-DS**

6100MM W X 6100MM D X 1070MM H
Code: **STHT-6161-SS**

6100MM W X 6100MM D X 1070MM H
Code: **STHT-6161-DS**

SS Single Sided **DS** Double Sided



SOFT TOUCH

HANGING SQUARE

Utilise our square hanging structure for a distinctive dimensional display. The stretch material will provide you with a professional and creaseless display.

- Aluminium tubing with push-fit assembly
- Double-sided graphic sock with zip fastening
- Full colour print on 210gsm stretch display polyester
- Single- or double-sided print available
- Machine washable and replaceable graphics
- Carry bag included
- 1-year warranty on hardware

2438MM W X 2438MM D X 1070MM H
Code: **STHS-2424-SS**

2438MM W X 2438MM D X 1070MM H
Code: **STHS-2424-DS**

4880MM W X 4880MM D X 1220MM H
Code: **STHS-4444-SS**

4880MM W X 4880MM D X 1220MM H
Code: **STHS-4444-DS**

6100MM W X 6100MM D X 1220MM H
Code: **STHS-6161-SS**

6100MM W X 6100MM D X 1220MM H
Code: **STHS-6161-DS**

SS Single Sided **DS** Double Sided



PRINTED TABLECLOTHS

Printed tablecloths are ideal for trade shows, exhibitions, open days, and many other social events. This is a perfect starting point to make an impact and increase your brand presence.

- 210gsm display polyester
- Fire-retardant coating on material
- Full colour dye sublimation print
- Stitched all around using 100% polyester thread
- Special bespoke finishing available
- Bespoke size tablecloths also available - quote on request
- Suitable to cover 5ft & 6ft table
- Open at the back for easy access for storage under the table

1540MM X 2780MM

Code: **PTC001**

Outdoor version?

Looking for outdoor tablecloths?

We can offer our full tablecloth range in 260gsm material, which is suitable for outdoor use. **Please speak to a member of our sales team for more information.**



PRINTED TABLECLOTHS

Our tablecloths are featured with an open back design to offer a discreet solution for concealing boxes or personal items allowing you to gain a professional and neat look.

- 210gsm display polyester
- Fire-retardant coating on material
- Full colour dye sublimation print
- Stitched all around using 100% polyester thread
- Special bespoke finishing available
- Bespoke size tablecloths also available - quote on request
- Suitable to cover a 6ft table
- Open at the back for easy access for storage under the table

1540MM X 3260MM

Code: **PTC002**



PRINTED TABLECLOTHS

This is the perfect cost-effective solution as you can reuse this product as many times as you want. As this material is machine washable, you can make sure it stays fresh and clean.

- 210gsm display polyester
- Fire-retardant coating on material
- Full colour dye sublimation print
- Stitched all around using 100% polyester thread
- Special bespoke finishing available
- Bespoke size tablecloths also available - quote on request
- Suitable to cover a 5ft & 6ft table
- Open at the back for easy access for storage under the table

1780MM X 2780MM

Code: **PTC101**

Outdoor version?

Looking for outdoor tablecloths?

We can offer our full tablecloth range in 260gsm material, which is suitable for outdoor use. **Please speak to a member of our sales team for more information.**



PRINTED TABLECLOTHS

Whether it's your logo, tagline, or domain, your possibilities are endless as we offer full colour print.

- 210gsm display polyester
- Fire-retardant coating on material
- Full colour dye sublimation print
- Stitched all around using 100% polyester thread
- Special bespoke finishing available
- Bespoke size tablecloths also available - quote on request
- Suitable to cover a 6ft table
- Open at the back for easy access for storage under the table

1780MM X 3260MM

Code: **PTC102**



PRINTED TABLECLOTHS

Use our printed tablecloth for any exhibition or event. With full colour print available and beautiful draped edges, you will without a doubt make an impressionable impact.

- 210gsm display polyester
- Fire-retardant coating on material
- Full colour dye sublimation print
- Stitched all around using 100% polyester thread
- Special bespoke finishing available
- Bespoke size tablecloths also available - quote on request
- Suitable to cover a 8ft table
- Open at the back for easy access for storage under the table

1540MM X 3660MM

Code: PTC003

Outdoor version?

Looking for outdoor tablecloths?

We can offer our full tablecloth range in 260gsm material, which is suitable for outdoor use. **Please speak to a member of our sales team for more information.**



PRINTED TABLECLOTHS

A cost-effective solution which is sure to leave a lasting impression. We print onto 210gsm display polyester as it is both wrinkle and shrink resistant which makes it the perfect tablecloth for any purpose.

- 210gsm display polyester
- Fire-retardant coating on material
- Full colour dye sublimation print
- Stitched all around using 100% polyester thread
- Special bespoke finishing available
- Bespoke size tablecloths also available - quote on request
- Suitable to cover a 8ft table
- Open at the back for easy access for storage under the table

1780MM X 3660MM

Code: PTC103



STRETCH TABLECLOTH

A stretch tablecloth transforms any table with a smooth, crease-free finish. Stretch tablecloths are unaffected by the wind if used outdoors and are easy to care for.

The fabric is a very durable polyester elastane, with reinforced pockets for the table feet.

Suitable for trestle tables only.

- 270gsm stretch polyester
- Fire rated fabric
- Full colour high resolution print
- Available in three different sizes

4FT X 2FT TRESTLE

Code: **STC401**

5FT X 2FT TRESTLE

Code: **STC501**

6FT X 2FT TRESTLE

Code: **STC601**



BOX TABLECLOTHS

Perfectly fitted to a standard 6ft x 2ft trestle table, our box tablecloths fit snugly and avoid draping corners. Printed in full colour on 210gsm display polyester, these tablecloths are hemmed all around and stitched together, creating a neat and stylish finish.

- 210gsm display polyester
- Fire-retardant coating on material
- Full colour dye sublimation print
- Stitched all around using 100% polyester thread
- Special bespoke finishing available
- Bespoke size tablecloths also available - quote on request

3280MM X 2060MM

Code: **BTC201**



TO COVER
A 6FT
TABLE



CIRCULAR TABLECLOTHS



Choose from one of our three circular tablecloth sizes, all designed to fit an average table 75cm in height. With full colour print as standard, any design is possible.

- 210gsm display polyester
- Fire rated fabric
- Stitched all around using 100% polyester thread
- Custom bespoke finishing available



HALF DROP

4FT DIAMETER	5FT DIAMETER
Code: CTC401H	Code: CTC501H
6FT DIAMETER	
Code: CTC601H	

FULL DROP

4FT DIAMETER	5FT DIAMETER
Code: CTC401F	Code: CTC501F

TABLE RUNNERS



Put the finishing touch to your display by adding one of our table runners. They are printed full colour across the whole material, so you can have any design that you'd like.

We finish the table runners by hemming them all around and they can be washed to keep them fresh and clean.

- 210gsm display polyester
- Fire-retardant coating on material
- Stitched all around using 100% polyester thread
- Bespoke sizes also available – quote on request



2000MM X 600MM	2000MM X 800MM
Code: PTR004	Code: PTR003
2000MM X 900MM	2000MM X 1000MM
Code: PTR002	Code: PTR001

Check out the

LATEST IN

PREMIUM EVENT DISPLAYS

Glopix LED Lightboxes are a visually impactful exhibition display solution with minimum assembly.

With dynamic full colour graphics printed on premium back-lit fabric, these LED lightboxes are available in a variety of widths and heights. Glopix LED Lightbox displays are easily powered with a standard transformer and 3-pin plug, meaning they can be used in almost any indoor location. Each lightbox display is supplied with its own padded carry case, which is big enough to safely transport everything, including the printed graphics.

No tools required to assemble, making this a simple self-build product to build; simply connect the frame together and attach the graphics. Shine a light on your brand and grab the attention of anyone passing by.



LIGHTWEIGHT

Easy to transport or carry to your next event



NO TOOLS REQUIRED

Simple set-up that takes just a few minutes



DOUBLE-SIDED AVAILABLE

Ensure that your message is seen from all angles



FULL ILLUMINATION

The latest high-lumen technology provides complete light coverage



MODULAR PRODUCT

Connect your Glopix LED Lightboxes together to create stunning displays



EASY TO POWER

These lightboxes use a standard UK 3-pin plug

GLOPIX LIGHTBOX

850MM WIDE

For amazing visuals our Glopix LED lightboxes will bring your designs to life. All our LED lightboxes are supplied with high resolution fabric graphics which are simple to attach. The graphics are finished with a flexible silicone edge which pushes into the frame.

- White PVC frame with flush fitting 3-watt LED lights
- Incorporates two-twist out feet per lightbox
- Full colour graphics printed on SEG back-lit fabric
- Quick and easy tool free assembly
- Standard transformer with a 3-pin plug
- Padded carry case included
- 1-year warranty on hardware

850MM W X 2000MM H X 120MM D
Code: GLP212
850MM W X 2250MM H X 120MM D
Code: GLP201
850MM W X 2500MM H X 120MM D
Code: GLP222



Carry case included.



GLOPIX LIGHTBOX

1000MM WIDE

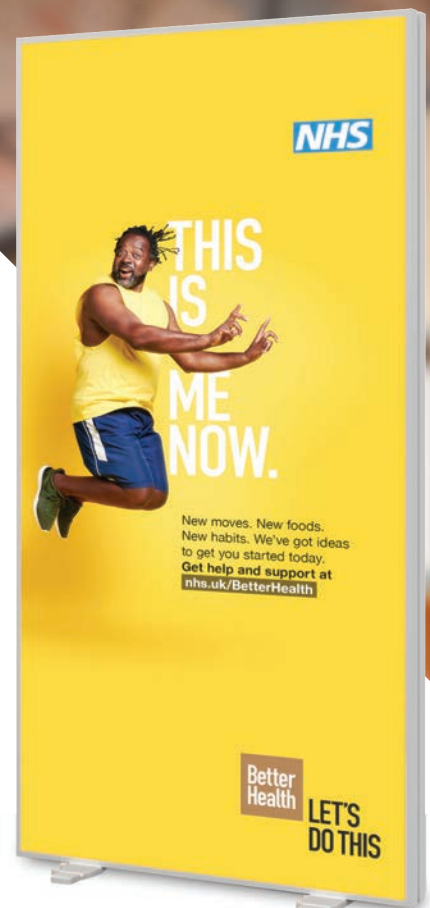
Utilise our 1000mm wide Glopix Lightbox display for any promotional and marketing event. This portable product is easily powered with a standard transformer and a 3-pin plug.

- White PVC frame with pre-installed flush 3-watt LED lights
- Incorporates two-twist out feet per lightbox
- Full colour graphics printed on SEG back-lit fabric
- Quick and easy tool free assembly
- Standard transformer with a 3-pin plug
- Padded carry case included
- 1-year warranty on hardware

1000MM W X 2000MM H X 120MM D
Code: GLP210
1000MM W X 2250MM H X 120MM D
Code: GLP202
1000MM W X 2500MM H X 120MM D
Code: GLP208



Carry case included.



GLOPIX LIGHTBOX

2000MM WIDE

If you are looking for a wider display, our 2000mm wide Glopix is the perfect match for you. The tension fabric display will allow you to create an elegant and creaseless display.

- White PVC frame with pre-installed flush 3-watt LED lights
- Full colour graphics printed on SEG back-lit fabric
- Quick and easy tool free assembly
- Standard transformer with a 3-pin plug
- Padded carry case included
- 1-year warranty on hardware

2000MM W X 2000MM H X 120MM D
Code: GLP101
2000MM W X 2250MM H X 120MM D
Code: GLP203
2000MM W X 2500MM H X 120MM D
Code: GLP213



Carry case included.

GLOPIX LIGHTBOX

3000MM WIDE

Our largest Glopix we have to offer is 3000mm wide and available in three different heights. With full colour print available, you can design this large print area however you like.

- White PVC frame with pre-installed flush 3-watt LED lights
- Quick and easy tool free assembly
- Full colour graphics printed on SEG back-lit fabric
- Standard transformer with a 3-pin plug
- Padded carry case included
- 1-year warranty on hardware

3000MM W X 2000MM H X 120MM D
Code: GLP102
3000MM W X 2250MM H X 120MM D
Code: GLP204
3000MM W X 2500MM H X 120MM D
Code: GLP205



Carry case included.

GLOPIX COUNTER

1000MM WIDE



A Glopix counter perfectly complements our LED lightbox range. Using the same high-quality graphics and assembly as an LED lightbox, our Glopix counters are a dynamic and eye-catching addition to your exhibition stand. Both sides of the counter are illuminated, displaying your logo or message in the best possible way.

- White PVC frame with pre-installed flush 3-watt LED lights with a wooden top
- Full colour graphics printed on SEG back-lit fabric
- Tabletop measures 1100mm (l) x 320mm (w)
- Quick and easy tool free assembly
- Standard transformer with a 3-pin plug
- Padded carry case included
- 1-year warranty on hardware

1000MM X 1000MM X 120MM D

Code: **GLP401**



Carry case included.



GLOPIX LIGHTBOX

1500MM WIDE



Utilise our 1500m wide and 1000mm high lightbox and assemble your own modular stand for an impressive and stunning display.

- White PVC frame with pre-installed flush 3-watt LED lights
- Quick and easy tool free assembly
- Full colour graphics printed on SEG back-lit fabric
- Standard transformer with a 3-pin plug
- Padded carry case included
- 1-year warranty on hardware

1500MM W X 1000MM H X 120MM D

Code: **GLP301**



Carry case included.



GLOPIX 2M X 2M

EXHIBITION KIT 1



We've put together a range of portable exhibition stand packages to help you bring your designs to life.

- x2 2250 x 850mm Glopix Lightbox
- x2 2250 x 1000mm Glopix Lightbox
- x2 90° connectors
- x2 180° connectors
- x6 Side-by-side magnetic connectors
- x1 Pair of half-feet
- Carry case
- 1-year warranty on hardware

GLOPIX 2M X 2M STAND
Code: **GLP22-KIT**



GLOPIX 2M X 2M

EXHIBITION KIT 1 PRO



- x2 2250 x 850mm Glopix Lightbox
- x2 2250 x 1000mm Glopix Lightbox
- x2 90° connectors
- x2 180° connectors
- x6 Side-by-side magnetic connectors
- x1 Pair of half-feet
- x1 1000mm x 1000mm Glopix Lightbox Counter
- Carry case
- 1-year warranty on hardware

GLOPIX 2M X 2M STAND
Code: **GLP22-KITP**



GLOPIX 3M X 2M

EXHIBITION KIT 2



Our lightbox exhibition kits are self-build and tool free – perfect for any event or exhibition.

- x1 2250 x 2000mm Glopix Lightbox
- x1 2250 x 1000mm Glopix Lightbox
- x2 2250 x 850mm Glopix Lightbox
- x2 90° connectors
- x2 180° connectors
- x6 Side-by-side magnetic connectors
- x1 Pair of half-feet
- Carry case
- 1-year warranty on hardware

GLOPIX 3M X 2M STAND
Code: GLP32-KIT



GLOPIX 3M X 2M

EXHIBITION KIT 2 PRO



- x1 2250 x 2000mm Glopix Lightbox
- x1 2250 x 1000mm Glopix Lightbox
- x2 2250 x 850mm Glopix Lightbox
- x2 90° connectors
- x2 180° connectors
- x6 Side-by-side magnetic connectors
- x1 Pair of half-feet
- x1 1000mm x 1000mm Glopix Lightbox Counter
- Carry case
- 1-year warranty on hardware

GLOPIX 3M X 2M STAND
Code: GLP32-KITP



GLOPIX 3M X 3M

EXHIBITION KIT 3



Our lightbox exhibition kits are self-build and tool free – perfect for any event or exhibition.

- x2 2250 x 2000mm Glopix Lightbox
- x2 2250 x 850mm Glopix Lightbox
- x2 90° connectors
- x2 180° connectors
- x6 Side-by-side magnetic connectors
- x1 Pair of half-feet
- Carry case
- 1-year warranty on hardware



GLOPIX 3M X 3M STAND
Code: **GLP33-KIT**

GLOPIX 3M X 3M

EXHIBITION KIT 3 PRO



- x2 2250 x 2000mm Glopix Lightbox
- x2 2250 x 850mm Glopix Lightbox
- x2 90° connectors
- x2 180° connectors
- x6 Side-by-side magnetic connectors
- x1 Pair of half-feet
- x1 1000mm x 1000mm Counter
- Carry case
- 1-year warranty on hardware



GLOPIX 3M X 3M STAND
Code: **GLP33-KITP**

GLOPIX 4M X 3M

EXHIBITION KIT 4



Our lightbox exhibition kits are self-build and tool free – perfect for any event or exhibition.

- x1 2250 x 3000mm Glopix Lightbox
- x1 2250 x 2000mm Glopix Lightbox
- x2 2250 x 850mm Glopix Lightbox
- x2 90° connectors
- x2 180° connectors
- x6 Side-by-side magnetic connectors
- x1 Pair of half-feet
- Carry case
- 1-year warranty on hardware

GLOPX 4M X 3M STAND

Code: **GLP43-KIT**



GLOPIX 4M X 3M

EXHIBITION KIT 4 PRO



- x1 2250 x 3000mm Glopix Lightbox
- x1 2250 x 2000mm Glopix Lightbox
- x2 2250 x 850mm Glopix Lightbox
- x2 90° connectors
- x2 180° connectors
- x6 Side-by-side magnetic connectors
- x1 Pair of half-feet
- x1 1000mm x 1000mm Glopix Lightbox Counter
- Carry case
- 1-year warranty on hardware

GLOPX 4M X 3M STAND

Code: **GLP43-KITP**



GLOPIX 5M X 3M

EXHIBITION KIT 5



Create your own dynamic display, that will bring your design to life and leave a lasting impact.

- x3 2250 x 2000mm Glopix Lightbox
- x2 2250 x 850mm Glopix Lightbox
- x2 90° connectors
- x3 180° connectors
- x9 Side-by-side magnetic connectors
- x1 Pair of half-feet
- Carry case
- 1-year warranty on hardware

GLOPIX 5M X 3M STAND
Code: **GLP53-KIT**



GLOPIX 5M X 3M

EXHIBITION KIT 5 PRO



- x3 2250 x 2000mm Glopix Lightbox
- x2 2250 x 850mm Glopix Lightbox
- x2 90° connectors
- x3 180° connectors
- x9 Side-by-side magnetic connectors
- x1 Pair of half-feet
- x1 1000mm x 1000mm Glopix Lightbox Counter
- Carry case
- 1-year warranty on hardware

GLOPIX 5M X 3M STAND
Code: **GLP53-KITP**



GLOPIX 6M X 3M

EXHIBITION KIT 6



You can also order replacement graphics to cater for different events so you can reuse the hardware as many times as you want.

- x2 2250 x 2000mm Glopix Lightbox
- x2 2250 x 850mm Glopix Lightbox
- x1 2250 x 3000mm Glopix Lightbox
- x2 90° connectors
- x3 180° connectors
- x9 Side-by-side magnetic connectors
- x1 Pair of half-feet
- Carry case
- 1-year warranty on hardware

GLOPIX 6M X 3M STAND
Code: GLP63-KIT



GLOPIX 6M X 3M

EXHIBITION KIT 6 PRO



- x2 2250 x 2000mm Glopix Lightbox
- x2 2250 x 850mm Glopix Lightbox
- x1 2250 x 3000mm Glopix Lightbox
- x2 90° connectors
- x3 180° connectors
- x9 Side-by-side magnetic connectors
- x1 Pair of half-feet
- x1 1000mm x 1000mm Glopix Lightbox Counter
- Carry case
- 1-year warranty on hardware

GLOPIX 6M X 3M STAND
Code: GLP63-KITP



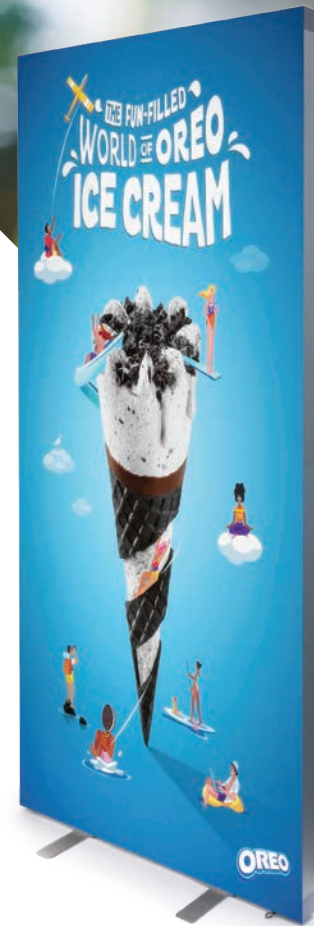
BOSS LIGHT

FREE STANDING LIGHTBOX

The Boss Light lightbox is designed with a 60mm profile depth for a slim and sophisticated look. This product is available in both single- and double-sided print.

- Aluminium frame with pre-installed 2-watt LED lights
- Full colour graphics printed on SEG back-lit fabric
- Twin twist out feet incorporated with the frame
- Quick and easy tool free assembly
- Standard transformer with a 3-pin plug
- 1-year warranty on hardware

CODE	DESCRIPTION
BOS001SS	2000mm x 850mm x 60mm (single sided)



RAYO

FREE STANDING LIGHTBOX

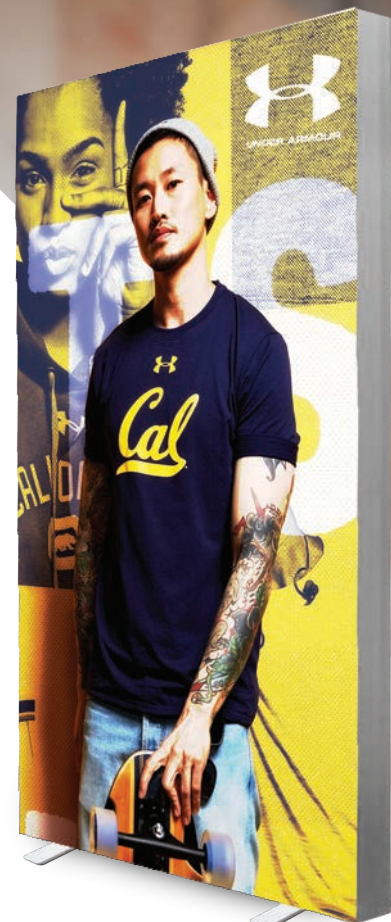
Our Rayo lightbox offers a 100mm profile depth with a double-sided print and no tools required for the assembly process.

- Aluminium frame with pre-installed 2-watt LED lights
- Full colour graphics printed on SEG back-lit fabric
- Twin twist out feet incorporated with the frame
- Quick and easy tool free assembly
- Standard transformer with a 3-pin plug
- Padded carry case included
- 1-year warranty on hardware

CODE	DESCRIPTION
RAY002	2000mm x 1000mm x 100mm (double-sided)



Carry case included.



LIGHTBOX ACCESSORIES

We supply a variety of connectors so you can configure lightboxes to your requirements for a distinctive and unmissable display. If you have any questions or need advice, do not be afraid to contact our sales team for their expertise. They are always happy to help.

180° CONNECTOR (PAIR)



180° CONNECTOR

Code: GLSCO

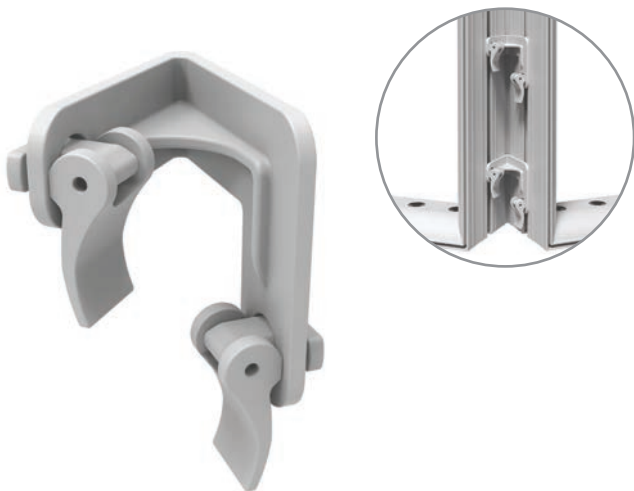
90° CONNECTOR (PAIR)



90° CONNECTOR

Code: GL90C

45° CONNECTOR



45° CONNECTOR

Code: GL45C

180° CLEAR PLASTIC CONNECTOR (PACK OF 4)



PLASTIC CONNECTOR

Code: GLSUC

LIGHTBOX ACCESSORIES

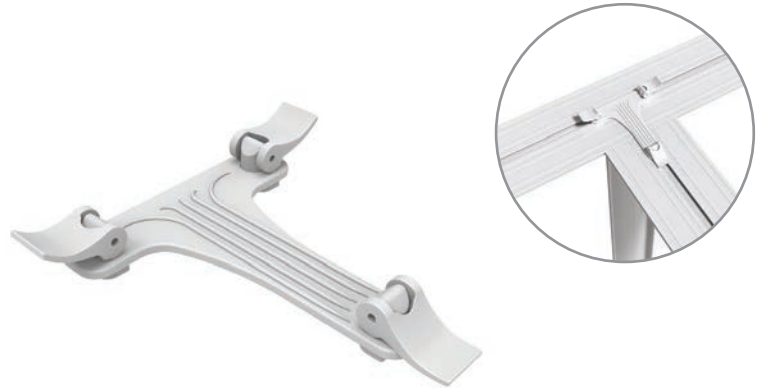
SIDE BY SIDE MAGNETIC CONNECTOR (PAIR)



SIDE BY SIDE CONNECTOR

Code: **GLSSM**

T BRACKET CONNECTOR (PAIR)



T-BRACKET CONNECTOR

Code: **GLTBC**

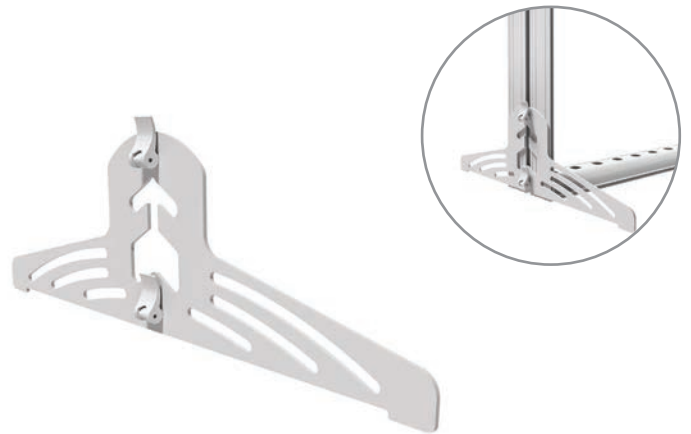
16" SIDE LOCKED FEET



16" FOOT

Code: **GLSFC**

20" SIDE LOCKED FEET



20" FOOT

Code: **GLSSF**

LIGHTBOX ACCESSORIES

SINGLE SIDED SHELF



SINGLE SHELF

Code: **GLSSH**

*Only suitable for 1000mm wide Glopix

DOUBLE SIDED SHELF

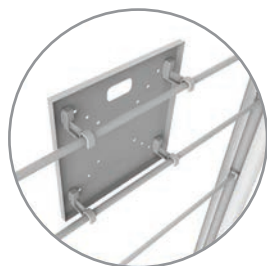


DOUBLE SHELF

Code: **GLDSH**

*Only suitable for 1000mm wide Glopix

MONITOR BRACKET



MONITOR BRACKET

Code: **GLMB**

*Only suitable for 1000mm wide Glopix

LITERATURE RACK W/ CONNECTOR



LIT RACK W/ CONNECTOR

Code: **GLBH**

LIGHTBOX ACCESSORIES

Use our wheeled cases for easy transportation and safe storage of lightboxes in-between events. We also provide power supplies and extension cords to support your needs.

WHEELED HARD CASE

1194mm x 229mm x 407mm



CASE

Code: **GLHWC**

LARGE WHEELED HARD CASE

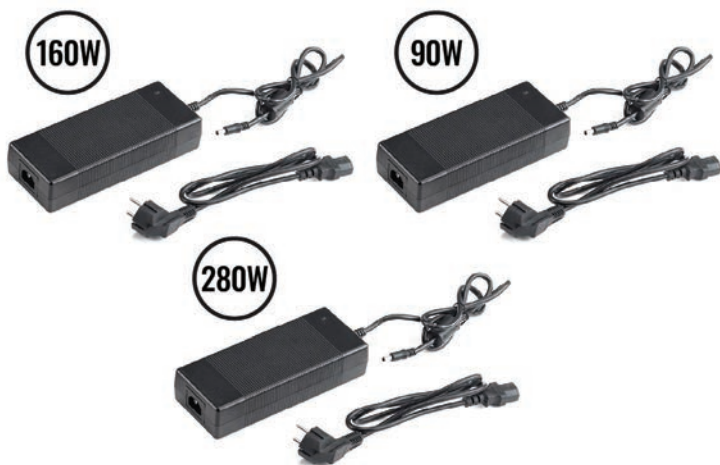
1194mm x 318mm x 407mm



LARGE CASE

Code: **GLHLWC**

POWER SUPPLY



POWER SUPPLY 90W

Code: **GLPS90**

POWER SUPPLY 160W

Code: **GLPS160**

POWER SUPPLY 280W

Code: **GLPS280**

EXTENSION POWER CORD



EXTENDER CORD

Code: **GLPL**

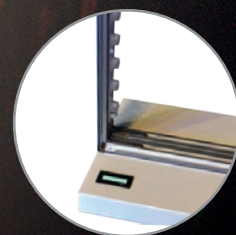
Check out our

RAYO RECHARGE

WIRELESS LED LIGHTBOX



Carry case included.



Recharge base

1000MM W X 2000MM H X 85MM D

Code: RRC1000

OUR IMPRESSIVE AND PORTABLE RAYO RECHARGE LED LIGHTBOX DISPLAY IS THE IDEAL ADDITION TO YOUR NEXT EXHIBITION STAND.

Measuring in at 1000mm (w) x 2000mm (h) x 85mm (d) and weighing only 27.5kg, the Rayo Recharge is easy to transport in the supplied wheeled carry bag. This lightbox features tool free assembly and 360° wheels on the base to easily manoeuvre the lightbox into position. The Rayo Recharge is wireless and rechargeable and offers more versatility than a standalone option. With a 14-hour battery life after a full 7-hour charge, you no longer need to worry about tripping over cables or powering the unit. With our LED lightbox range, you also have the option to change the custom printed graphics as needed, allowing you to keep your design or message fresh and up to date. The Rayo Recharge is printed double sided as standard on backlit fabric.

Check out our

CUSTOM PRINTED

ROLLER BANNERS



WHAT ARE ROLLER BANNERS?

Roller banners are an ideal solution for a quick and effective advertising solution. These retractable banners are printed onto 420gsm SoFlat for a smooth print finish and blocks light from passing through.

We have an array of sizes available that have a quick, tool free assembly.

EXPOVISION

ROLLER BANNER



Roller banners have always been one of the most popular promotional products and our Expovision roller banner is the best selling option within this range. This lightweight roller banner is our value option and is perfect for any trade show or exhibition event.

- Assembled height: 2000mm
- Printed on 420gsm SoFlat
- Two twist out feet for added stability
- Compact lightweight base
- Install time in 25 seconds
- Weight: 3.1kg
- Includes a carry case
- 1-Year warranty on hardware

600MM	800MM
Code: EV600	Code: EV800



Front facing view.



Expovision base.



EXPOVISION DUO

ROLLER BANNER



The Expovision Duo roller banner features a double-sided display which means double the exposure. The strong aluminium base makes it robust and lightweight. Attached to the base are two rotating feet that lock at a 90-degree angle for stability. The Expovision Duo is supplied with a simple connector that connects two Expovision banners back-to-back, it's easy to assemble and change the configuration. With full colour print as standard, any design is possible.

- Printed on 420gsm SoFlat
- Supplied with a connector to fix the banners together
- Available in two widths: 800mm or 600mm
- Assembled height: 2000mm
- Full colour print as standard
- Supplied with carry bag for each banner
- 1-Year warranty on hardware

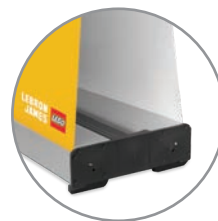
600MM	800MM
Code: EVD600	Code: EVD800



Expovision Duo connected.



Expovision Duo base.



Expovision Duo base.



MANTIS

ROLLER BANNER

The Mantis roller banner is a cost-effective promotional product that has a versatile of uses. They are great for retail stores, exhibitions, events and many more.

The graphic easily draws from the base and is hooked into place with a connectable pole. It retracts back into the base when not being used.

- Available in two widths - 850mm and 1000mm
- Assembled height: 2000mm
- All sizes are available in single sided print
- Printed on 420gsm SoFlat
- Suitable for indoor use only
- All products are individually boxed and supplied with a carry bag
- 1-Year warranty on hardware

850MM	1000MM
Code: MRB850	Code: MRB1000



Mantis base.



Mantis carry bag.



Mantis rear view.



MOSQUITO

ROLLER BANNER

The Mosquito is the ideal banner for all your graphic displays over 1200mm up to 2000mm wide. The graphic effortlessly pulls out from the base, and it is secured with a 3-part fixed bungee pole. It retracts to the base when not in use for ease and convenience.

- Available in three widths: 1200mm, 1500mm and 2000mm
- Assembled height: 2000mm
- Printed on 420gsm SoFlat
- Suitable for indoor use only
- All products are individually boxed and supplied with a carry bag
- x2 poles supplied for 1500mm and over
- 1-Year warranty on hardware

1200MM	1500MM
Code: MB1200	Code: MB1500
2000MM	
Code: MB2000	



Mosquito base.



RHINO

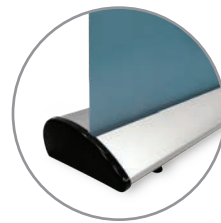
ROLLER BANNER



This smart mid-range roller banner comes complete with a substantial anodised silver casing making it ideal for multiple uses. A perfect combination of design and stability.

- Assembled graphic height: 2000mm
- Printed on 420gsm SoFlat
- Quick to assemble and easy to use
- Available in a choice of widths from 800mm up to 2000mm
- Includes quality foam padded carry bag
- x2 poles supplied for 1500mm and over
- 1-Year warranty on hardware

800MM	1000MM
Code: RR800	Code: RR1000
1200MM	1500MM
Code: RR1200	Code: RR1500
2000MM	
Code: RR2000	



Rhino base.



DEFENDER

ROLLER BANNER



The defender roller banner is the top end banner for all display purposes. With a sleek and strong square stable base that ensures that your message or campaign stands strong and proud. Easy to assemble with no tools required, simply lock the pole into place and pull the graphic up and secure it.

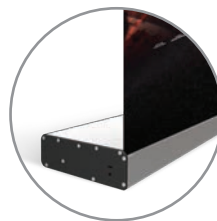
Lightweight and easy to transport, the Defender banner is supplied with its own padded carry bag. Choose from two different widths to fit perfectly in your venue or exhibition space. With full colour print as standard, any design is possible.

- Premium quality roller banner
- Printed on 420gsm SoFlat
- Square encased aluminium base with nylon-6 end caps
- Wider base for increased stability
- Available in two widths: 800mm or 1000mm
- Easy to assemble and lightweight
- Full colour print as standard
- Supplied with carry bag
- 1-Year warranty on hardware

800MM	1000MM
Code: DRB800	Code: DRB1000



Defender facing view.



Defender base.



WAVE

ROLLER BANNER

The Wave roller banner is an eye-catching roller banner with a uniquely shaped base. With no twist out feet, the Wave has a self-contained and sturdy aluminium base.

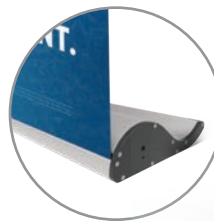
Easy to assemble and lightweight, Wave banners are perfect for exhibitions and transportation as they are supplied with their own carry bag. With a choice of five different widths, there is a size for every venue or space. With full colour print as standard, any design is possible.

- Stylish and stable base with nylon-6 side caps
- Printed on 420gsm SoFlat
- Elegant wave designed base for a sleek look with no feet
- Assembled height: 2000mm
- Easy to assemble and lightweight
- Full colour print as standard
- Supplied with carry bag
- x2 poles supplied for 1500mm and over
- 1-Year warranty on hardware

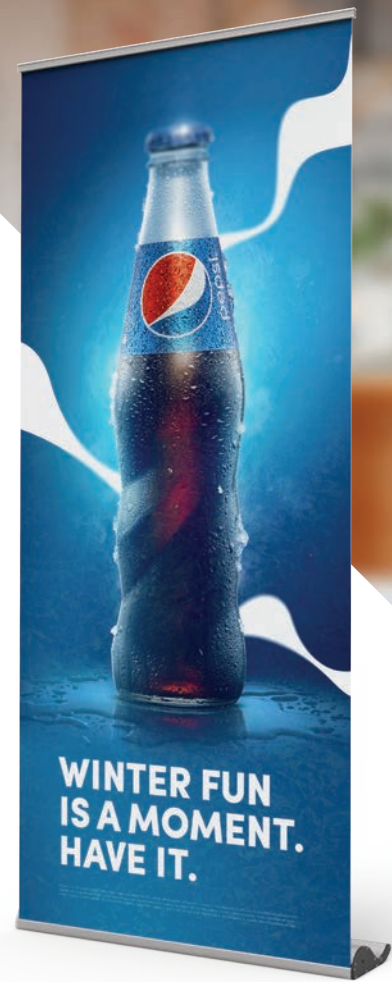
800MM	1000MM
Code: WRB800	Code: WRB1000
1200MM	1500MM
Code: WRB1200	Code: WRB1500
2000MM	
Code: WRB2000	



Front facing view.



Wave base.



BARRACUDA

ROLLER BANNER

Stylish design and proven reliability makes the Barracuda our most popular quality banner stand. Barracuda is the most feature-rich single-sided roller banner available and has been specially designed for maximum convenience and ease of use.

- Assembled graphic height: 2130mm
- Printed on 420gsm SoFlat
- Secure slide in graphic system
- Twist & Lock telescopic pole
- Supplied with quality foam padded carry bag
- Wide footprint for extra stability
- x2 poles supplied for 1500mm and over
- x3 poles supplied for 2400mm
- 5-Year warranty on hardware

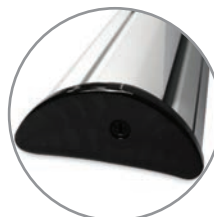
800MM	1000MM
Code: BR800	Code: BR1000
1200MM	1500MM
Code: BR1200	Code: BR1500
2000MM	2400MM
Code: BR2000	Code: BR2400



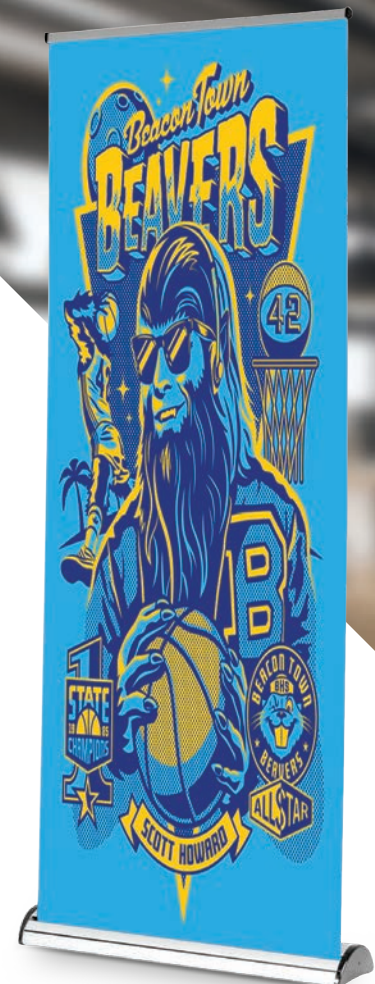
Barracuda poles.



Barracuda base.



Barracuda base side view.



EXPOVISION TWIN

ROLLER BANNER



Our Expovision Twin Roller Banner is our most popular double-sided roller banner stand. It is ideal for when your display needs to be seen from both sides. These roller banners have a compact, lightweight base and two twist out feet to help stability.

- Assembled height: 2000mm
- Printed on 420gsm SoFlat
- Both sides printed full colour
- Twist out feet for added stability
- Available in two widths – 850mm and 1000mm
- Supplied with padded carry bag



850MM	1000MM
Code: EVTW850	Code: EVTW1000



Carry bag.



Vision twin base.



RHINO TWIN

ROLLER BANNER



The Rhino Twin is a double-sided roller banner designed to impress. With a standard graphic height of 2100mm, it's a durable display that makes a big impact. With two graphics, you can be sure that your message or brand will be seen from all sides.

- Assembled graphic height: 2100mm
- Printed on 420gsm SoFlat
- Both sides printed full colour
- Available in two widths – 850mm and 1000mm
- Supplied with padded carry bag



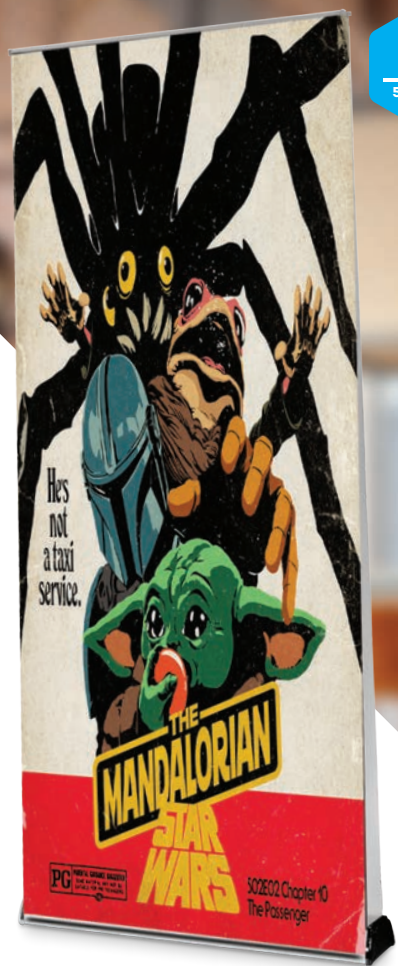
850MM	1000MM
Code: RTRB850	Code: RTRB1000



Rhino Twin poles.



Rhino Twin carry bag.



Check out our

CUSTOM PRINTED

POP UP DISPLAY & EXHIBITION KITS



UTILISE OUR POP-UP DISPLAY AND EXHIBITION KITS FOR A STUNNING SEAMLESS DISPLAY THAT CAN BE COMPLETED WITHIN MINUTES.

Simply pop out the aluminium frame and it will lock into place. It is just as easy to attach the graphic, so the assembly of these display kits are a breeze.

You can be as creative as you like as we offer full colour print as standard. Whether it's your brand message or logo it is sure to look great.

VISION STARTER KIT



This is probably the most well-known exhibition stand; a high-quality display which offers maximum impact. With a frameless appearance and high definition printing on to seamless panels, these stands really do make a big impression.

Pop up stands are made up of an aluminium scissor-lattice frame and individual printed graphic panels. These panels are finished with magnetic strips, so once you have opened the frame out and locked it into place, you simply place the panels onto it in order.

- x1 Pop-up stand frame
- x1 Set of high-quality printed graphics
- 5-year warranty on hardware

STRAIGHT

3X2 STRAIGHT	3X3 STRAIGHT
Code: PDV3X2S	Code: PDV3X3S
3X4 STRAIGHT	3X5 STRAIGHT
Code: PDV3X4S	Code: PDV3X5S

CURVE

3X2 CURVE	3X3 CURVE
Code: PDV3X2C	Code: PDV3X3C
3X4 CURVE	3X5 CURVE
Code: PDV3X4C	Code: PDV3X5C



VISION POP-UP DISPLAY BUNDLE KIT (CURVED)



Our bundle kit offers a full exhibition stand that is both convenient and outstanding. With this kit you are provided with a wheeled case and beech case top which allows you to transform the case into a counter.

We also provide you with the opportunity to print your own custom graphic wrap for the case for a unified and professional look.

- x1 Curve pop up stand frame
- x1 Set of high-quality printed graphics on 550 micron pop up PVC
- x1 Wheeled case with printed graphic on 320 micron pop up PVC
- x1 Beech case top
- x2 LED lights
- 5-year warranty on hardware

3X2 CURVE	3X3 CURVE
Code: PD3X2C	Code: PD3X3C
3X4 CURVE	3X5 CURVE
Code: PD3X4C	Code: PD3X5C



Pop up frame.



VISION POP-UP DISPLAY BUNDLE KIT (STRAIGHT)



The bundle kit is also available in a straight shape.

This is an ideal portable display for any event or exhibition as no tools are required for this kit, and it won't take longer than 15 minutes to set up.

- x1 Curve pop up stand frame
- x1 Set of high-quality printed graphics on 550 micron pop up PVC
- x1 Wheeled case with printed graphic on 320 micron pop up PVC
- x1 Beech case top
- x2 LED lights
- 5-year warranty on hardware

3X2 STRAIGHT	3X3 STRAIGHT
Code: PD3X2S	Code: PD3X3S
3X4 STRAIGHT	3X5 STRAIGHT
Code: PD3X4S	Code: PD3X5S



Magnetic bars.



Carry case.



VISION POP-UP BUNDLE PRO KIT



Utilise our Vision Pop Up Bundle Pro Kit for an unforgettable free-standing display. With this kit you can showcase video content to an engage your audience and maximise your marketing opportunities.

- x1 Pop up stand frame
- x1 TV mounting bracket (supports 25"-50" flat-screen TV)
- x1 Set of high-quality printed graphics on 550 micron pop up PVC
- x1 Wheeled case with printed graphic on 320 micron pop up PVC
- x1 Beech case top
- x2 LED lights
- 5-year warranty on frame
- 1-year warranty on TV monitor bracket

STRAIGHT

3X3 STRAIGHT	3X4 STRAIGHT
Code: PDTV3X3S	Code: PDTV3X4S
3X5 STRAIGHT	
Code: PDTV3X5S	

CURVE

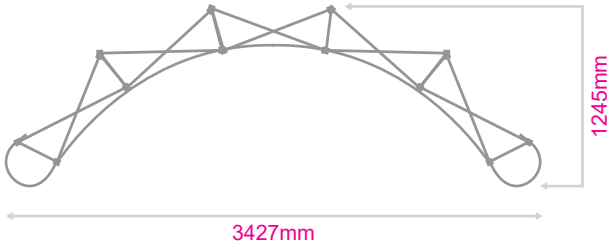
3X3 CURVE	3X4 CURVE
Code: PDTV3X3C	Code: PDTV3X4C
3X5 CURVE	
Code: PDTV3X5C	



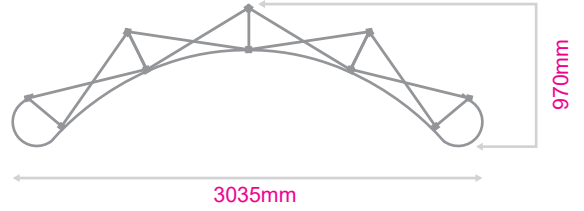
*TV is for illustrative purposes only and is not included in this package.

POP-UP FOOTPRINT SIZE

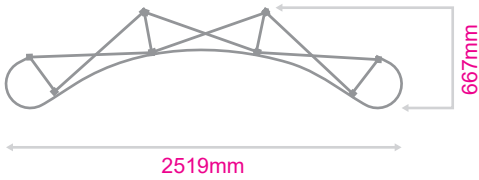
3X5 CURVED POP UP



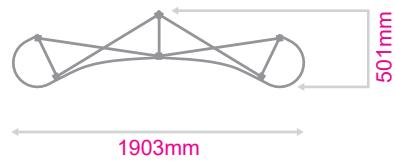
3X4 CURVED POP UP



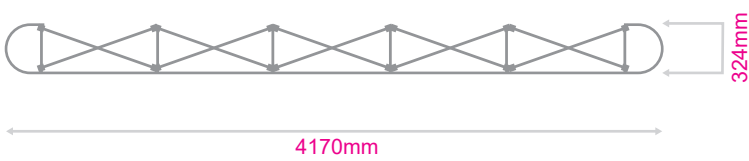
3X3 CURVED POP UP



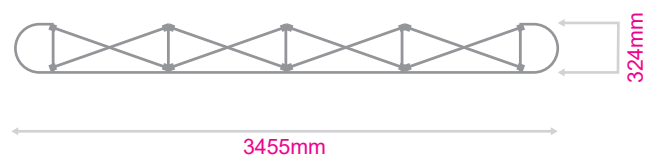
3X2 CURVED POP UP



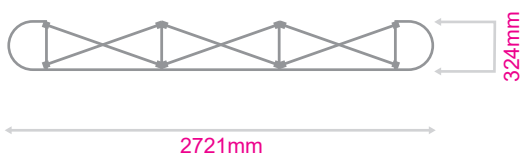
3X5 STRAIGHT POP UP



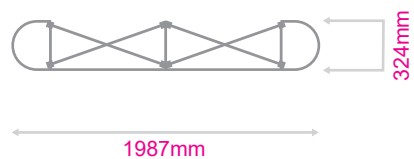
3X4 STRAIGHT POP UP



3X3 STRAIGHT POP UP



3X2 STRAIGHT POP UP



TEXTILE FABRIC POP-UP STAND

This fabric pop up stand is super lightweight and can be installed in less than five minutes. Available in various sizes and the graphic can be fully wrapped around the ends or made to fit just the front face.

- Simple yet impactful exhibition display solution
- Available in straight or curved
- Fabric fits smoothly across the frame work and stays in place once the frame has been collapsed
- Assembles in less than five minutes
- Printed on 210gsm display polyester
- 1-year warranty on hardware

STRAIGHT

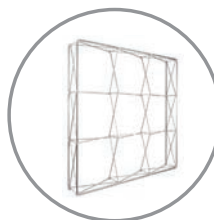
1525MM X 2262MM	2260MM X 2262MM
Code: TFP3X2	Code: TFP3X3
2995MM X 2262MM	3730MM X 2262MM
Code: TFP3X4	Code: TFP3X5

CURVE

1460MM X 2262MM	2250MM X 2262MM
Code: CFP3X2	Code: CFP3X3
2910MM X 2262MM	3520MM X 2262MM
Code: CFP3X4	Code: CFP3X5



FRAME STAND



CARRY BAG



PACKS AWAY EASILY



FABRIC POP-UP COUNTER

Use our sturdy Fabric Pop Up Counter for any event or exhibition. With a pop-up frame and velcro fitted graphic, you can set this counter up in less than five minutes.

- Assembled size 1065mm (w) x 1020mm (h) x 400mm (d)
- Straight appearance gives strength and stability
- Printed on 210gsm display polyester or 260gsm polyester canvas
- The graphics can be washed if required
- Complete tool free assembly
- Carry bag included
- 1-year warranty on hardware

FABRIC POP-UP COUNTER	OUTDOOR VERSION
Code: FPUC11	Code: FPUCO1

OUTDOOR POP-UP COUNTER



REVERSE VIEW



CARRY BAG



SEG FABRIC POP-UP STAND

The SEG Fabric Pop-Up Stand shrinks down in size - simply collapse the geometric frame and the SEG channel bars, and fold or roll the fabric graphics. Setup can be done by one person in 10 minutes. 1-year warranty on hardware.

All frames have assembled height of 2204mm and depth of 304mm. We offer the SEG fabric pop-up display stand in a choice of four width options.

NO LED LIGHTS

3 X 1	3 X 3
762mm Wide Code: SEG31	2204mm Wide Code: SEG33
3 X 2	3 X 4
1483mm Wide Code: SEG32	2925mm Wide Code: SEG34

WITH LED LIGHTS

3 X 1 LED	3 X 3 LED
762mm Wide Code: SEGLED31	2204mm Wide Code: SEGLED33
3 X 2 LED	3 X 4 LED
1483mm Wide Code: SEGLED32	2925mm Wide Code: SEGLED34

FRAME STAND



SEG POP-UP FABRIC COUNTER

The SEG* pop-up fabric counter is easy to set up and is lightweight. It comes with a printed fabric graphic complete with frame, a laminated table top, shelving and a canvas storage bag. This exhibition counter has a lightweight pop-up design that is much more efficient to pack and ship than traditional extrusion systems.

- Pop-up graphics create a perfect edge to edge solid appearance
- Stunning high-resolution graphics make for a brilliant fabric display
- Exchangeable graphics on this portable counter are easy to attach and swap out the pop-up fabric counter frame collapses easily and quickly
- Assembled size 1065mm (w) x 1020mm (h) x 400mm (d)
- 1-year warranty on hardware

SEG FABRIC COUNTER

Code: **SEG-C1**

*SEG = Silicone edge gasket.



SEG DISPLAY

KIT 1

Our SEG Fabric Pop-up kits are ideal for those looking for a seamless and photographic quality print. With a backdrop and a counter, you can be ready for any occasion. You can also convert this into a lightbox with our LED lighting kit.

- x1 3x2 SEG Pop-up Stand
- x1 SEG Pop-up Counter
- Full colour print on 210gsm display stretch polyester
- Tool free assembly
- Carry bag included
- 1-year warranty on hardware

SEG DISPLAY KIT 1

Code: **SEG-3X2KIT**



SEG DISPLAY

KIT 2

This kit is great for any exhibition or event as it has a quick assembly and disassembly. With no tools required, setting up won't take longer than 10 minutes.

- x1 3x3 SEG Pop-up Stand
- x1 SEG Pop-up Counter
- Full colour print on 210gsm display stretch polyester
- Tool free assembly
- Carry bag included
- 1-year warranty on hardware

SEG DISPLAY KIT 2

Code: **SEG-3X3KIT**



SEG DISPLAY KIT 3



It is the perfect on-the-go promotional material as we also provide carry bags for easy transportation and safe storage.

- x1 3x4 SEG Pop-up Stand
- x1 SEG Pop-up Counter
- Full colour print on 210gsm display stretch polyester
- Tool free assembly
- Carry bag included
- 1-year warranty on hardware

SEG DISPLAY KIT 3
Code: **SEG-3X4KIT**



LED LIGHTING KIT



Use our SEG Fabric Pop Up LED lighting kit to illuminate your design and make it vibrant. This lighting kit is easy to set up and available for all four sizes.

- 3 x 1: 72w / 2 pc LED Strips
- 3 x 2: 144w / 4 pc LED Strips
- 3 x 3: 216w / 6 pc LED Strips
- 3 x 4: 288w / 8 pc LED Strips
- 1-year (manufacturers warranty)

3X1 LED KIT
Code: **SEG-3X1-LED**

3X2 LED KIT
Code: **SEG-3X2-LED**

3X3 LED KIT
Code: **SEG-3X3-LED**

3X4 LED KIT
Code: **SEG-3X4-LED**



FABRIC DISPLAY

KIT 1

Use our fabric exhibition display kits for a quick yet effective display. With a pop-up frame and velcro fitted graphic, you will only need minutes to complete the assembly.

- x1 3x2 Straight Fabric Pop-up Stand
- x1 Fabric Pop-up Counter
- Full colour print on 210gsm display stretch polyester
- Tool free assembly
- Carry bag included
- 1-year warranty on hardware

FABRIC KIT 1

Code: **TFP-3X2KIT**



FABRIC DISPLAY

KIT 2

Perfect for any exhibitions or events, utilise this kit for an effective display that provides you with a professional and neat finish.

- x1 3x3 Straight Fabric Pop-up Stand
- x1 Fabric Pop-up Counter
- Full colour print on 210gsm display stretch polyester
- Tool free assembly
- Carry bag included
- 1-year warranty on hardware

FABRIC KIT 2

Code: **TFP-3X3KIT**



FABRIC DISPLAY

KIT 3

As the graphic is machine washable, you can re-use the graphic and ensure it stays fresh and clean. You can also order replaceable graphics for different events.

- x1 3x4 Straight Fabric Pop-up Stand
- x1 Fabric Pop-up Counter
- Full colour print on 210gsm display stretch polyester
- Tool free assembly
- Carry bag included
- 1-year warranty on hardware

FABRIC KIT 3

Code: TFP-3X4KIT



FABRIC DISPLAY

KIT 4

We print onto white polyester so the colours show off vibrantly and with full colour print available, you can design your graphics however you like.

- x1 3x5 Straight Fabric Pop-up Stand
- x1 Fabric Pop-up Counter
- Full colour print on 210gsm display stretch polyester
- Tool free assembly
- Carry bag included
- 1-year warranty on hardware

FABRIC KIT 4

Code: TFP-3X5KIT



EXPOVISION

ROLLER BANNER AND TABLECLOTH BUNDLE

A money saving package, the Expovision roller banner and tablecloth bundle is two of our most popular products paired together to create the perfect, instant exhibition stand.

The roller banner is compact, lightweight, and easy to carry. It pulls up easily to reveal the full promotional graphic. As easily as it was revealed, it packs away just as fast.

- x1 Expovision roller banner (800mm wide)
- x1 Printed tablecloth (1780mm x 2780mm)
- 1-year warranty on hardware



800MM

Code: TCEV800



RHINO

ROLLER BANNER AND TABLECLOTH BUNDLE

Make use of our Rhino roller banner and tablecloth bundle – an instant exhibition stand with two of our most popular products paired together.

With full colour graphic available you can utilise these two products to create an outstanding display.

- x1 Rhino roller banner (800mm wide)
- x1 Printed tablecloth (1780mm x 2780mm)
- 1-year warranty on hardware



800MM

Code: TCRR800



SHELL SCHEME GRAPHICS

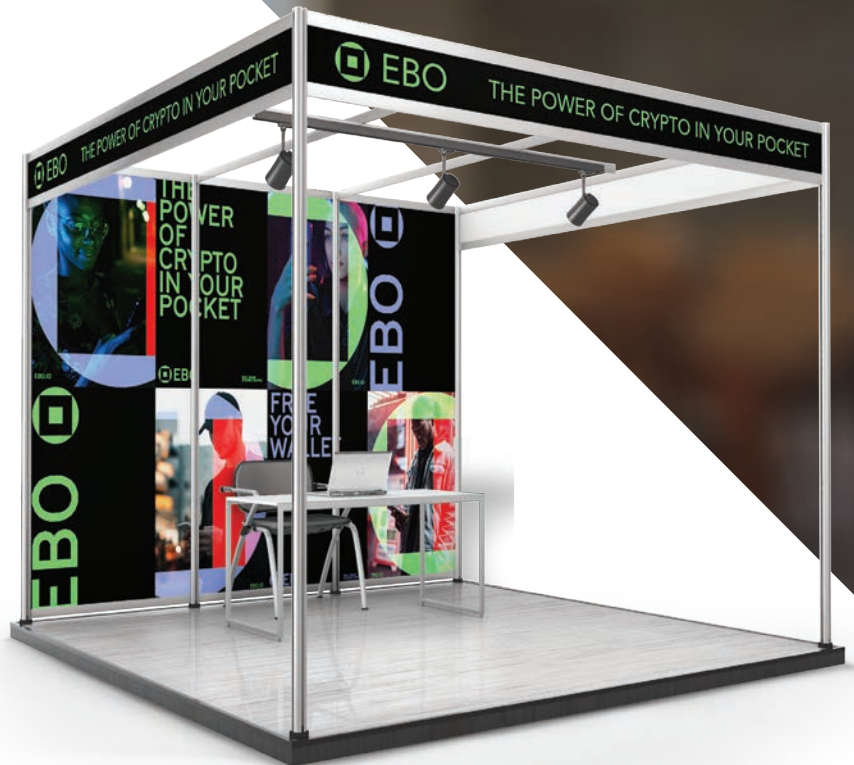


Simple, cost effective and easy to transport, printed graphics are the ideal shell scheme solution. Using SoFlat material, these graphic panels apply quickly and easily to your shell scheme and can be removed leaving no residue. When handled with care, the graphics can be used multiple times and on a variety of surfaces.

A standard panel measures 950mm (w) x 2340mm (h), the standard size of a UK and European shell scheme panel, but please confirm this information with the venue before ordering.

- Creates a visually impressive shell scheme framework
- SoFlat material is durable, fire retardant and won't rip
- Can be supplied with velcro fixing if required

PRICES AVAILABLE UPON REQUEST FOR OTHER SIZES



RIGID SHELL SCHEME PANELS



For a dynamic finish to your shell scheme, why not try rigid panels. Available on both 3mm and 5mm Foamex, these rigid panels are available with a full colour print, so any design is possible. The panels can be screwed into the shell scheme panel, or we can apply velcro as required.

A standard panel measures 950mm (w) x 2340mm (h), the standard size of a UK and European shell scheme panel, but please confirm this information with the venue before ordering.

- Produces an outstanding shell scheme framework
- Choose from either 3mm or 5mm Foamex
- Can be supplied with velcro fixing if required

PRICES AVAILABLE UPON REQUEST FOR OTHER SIZES



Check out our

CUSTOM PRINTED

POS & RETAIL PRODUCTS



WHY CHOOSE OUR POS & RETAIL PRODUCTS?

Using custom POS and retail products are a great method to promote your brand or any promotional offers. These are a cost-effective marketing tool which will catch customers attention and help drive sales.

Full colour print is available across all our products. If you require any bespoke products, contact our sales team, and they will find the best solution for you.

Check out our

WALL MOUNTED TFS DISPLAY



WHAT ARE WALL MOUNTED TFS DISPLAYS?

Our wall-mounted tension fabric display systems, commonly known as TFS frames are suitable for all silicone edge graphics. This new style of graphic display uses dye sublimation printed polyester graphics with a 14mm silicone keder edge. This is sewn to the edges of the graphic. Our high quality extruded framework is available in 15mm depth to suit small or large silicone edge graphic installations.

Popular as a point of sale display or as a marketing and branding tool in an office, showroom, reception, leisure centre, library or other business. The high quality seamless fabric graphic is printed using a dye sublimation printing technique and the edges are finished with a silicone edging making it easy to slot and secure the fabric graphic into the frame. Replacement fabric graphics can be purchased and are extremely easy to change when you need to change your wall display. **Custom sizes available; we can make this frame to any size you require.**

HARDWARE

500 X 500 X 17MM Code: H-TFS500x500	1000 X 1000 X 17MM Code: H-TFS1000x1000	1000 X 2000 X 17MM Code: H-TFS2000x1000	2000 X 2000 X 17MM Code: H-TFS2000x2000	2000 X 3000 X 17MM Code: H-TFS2000x3000
2000 X 4000 X 17MM Code: H-TFS2000x40000	A2 (420 X 594 X 17MM) Code: H-TFSA2	A1 (594 X 841 X 17MM) Code: H-TFSA1	AO (841 X 1189 X 17MM) Code: H-TFSA0	

GRAPHICS

500 X 500 X 17MM Code: G-TFS500x500	1000 X 1000 X 17MM Code: G-TFS1000x1000	1000 X 2000 X 17MM Code: G-TFS2000x1000	2000 X 2000 X 17MM Code: G-TFS2000x2000	2000 X 3000 X 17MM Code: G-TFS2000x3000
2000 X 4000 X 17MM Code: G-TFS2000x40000	A2 (420 X 594 X 17MM) Code: G-TFSA2	A1 (594 X 841 X 17MM) Code: G-TFSA1	AO (841 X 1189 X 17MM) Code: G-TFSA0	

INDOOR OR OUTDOOR BRANDED CUSHIONS



Whether you want a cosy decoration for your home or corporate branding for your reception area, our printed cushions are printed full colour, so any design is possible.

- Fully customised printing
- Printed on 210gsm display polyester or 260gsm polyester canvas
- Zip fastening
- Fully washable at 30°C
- Medium temperature iron
- Fully colour-fast
- Measuring 400mm (w) x 400mm (h)



SQUARE CUSHION
Code: **BC400**

OUTDOOR VERSION
Code: **BC400OUT**



BRANDED LUMBAR CUSHIONS



Our lumbar support cushions are a lightweight back support for use in the car, office, home or even on holiday.

Measuring 350mm (w) x 250mm (h), these cushions can be fully branded with your company logo, brand or message.

- Finished with a zip fastening



LUMBAR CUSHION
Code: **BLC350**



BRANDED BEANBAGS



Brilliant for indoor or outdoor use, bean bags provide an ideal place to really relax. Our durable beanbags are well made from hard wearing fabric with a fire-retardant polystyrene bead filling in an internal case. The beanbag arrives filled and ready to use so you simply unpack and start relaxing.

- Photographic quality print
- Hard wearing 210gsm display polyester with zip fastening
- Machine washable at 30°C with little detergent
- Also available in outdoor material 260gsm polyester canvas
- No minimum order

ROUND

700MM X 1100MM

Code: **BB70**

850MM X 1100MM

Code: **BB85**

1000MM X 1100MM

Code: **BB100**

RECTANGLE

1300MM X 1000MM

Code: **BB130**

SQUARE

1200MM X 1200MM

Code: **BB120**



CUBE SEATS



Made from lightweight foam and offers a comfortable seating option. Our cube seats are stylish, modern, and easily transportable.

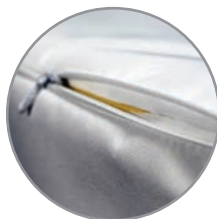
- 400mm x 400mm x 400mm
- Full colour print on all six sides
- Zip fastening
- Indoor material: 210gsm display polyester
- Outdoor material: 260gsm polyester canvas
- No minimum order

CUBE SEATS INDOOR

Code: **CS400IN**

CUBE SEATS OUTDOOR

Code: **CS400OU**



Zipped across the top.



Internal foam.



PRINTED PADDLE



- Available in single or double sided print using the latest UV technology, bringing your images to life with great colour vibrancy
- Custom sizes available
- Printed direct onto 5mm Foamex board which is both rigid and durable whilst still being lightweight and flexible
- Suitable for both indoor or outdoor use



ROUND A4	RECTANGLE A4
Code: PPA4DSC	Code: PPA4DSR
ROUND A3	RECTANGLE A3
Code: PPA3DSC	Code: PPA3DSR

SS Single Sided **DS** Double Sided



LOLLIPOP SIGNS



Our lightweight Lollipop Signs are a great temporary signage solution which are also fully recyclable. These are ideal for events, bar promotions, or to be used as stop-and-go signs.

- Printed onto 5mm Foamex
- Full colour double sided print
- Custom size available
- Maximum pole height 2.4m (wooden)
- No minimum order

300MM DIAMETER	400MM DIAMETER
Code: LPS-300DS	Code: LPS-400DS

SS Single Sided **DS** Double Sided



DESKTOP FLAGS

Desktop flags are a cost-effective advertising solution which is sure to look stunning on any desk or table.

- Available in two shapes
- Flag size 440mm (h) x 140mm (w)
- Graphic printed in full colour on 115gsm knitted polyester
- 1-year warranty on hardware



DESKTOP CURVE	DESKTOP TEARDROP
Code: DTF01-SS	Code: DTF02-SS
Code: DTF01-DS	Code: DTF02-DS

SS Single Sided **DS** Double Sided



EXPOVISION DESKTOP ROLLER BANNER

Expo vision desktop roller banners are a great option for anyone looking for an affordable, versatile display. They may be small, but desktop roller banners make a big impression. They're perfect if you are restricted for space at a trade show or exhibition.

Desktop roller banners are lightweight and easy to assemble, pulling out of a stable aluminium base with adjustable feet. They're wonderfully quick to pack away, each coming with its own carry pouch.

- Available in two sizes - A3 and A4
- Graphic printed full colour on 420gsm SoFlat



EXPO DESKTOP A4	EXPO DESKTOP A3
Code: EVDA4	Code: EVDA3

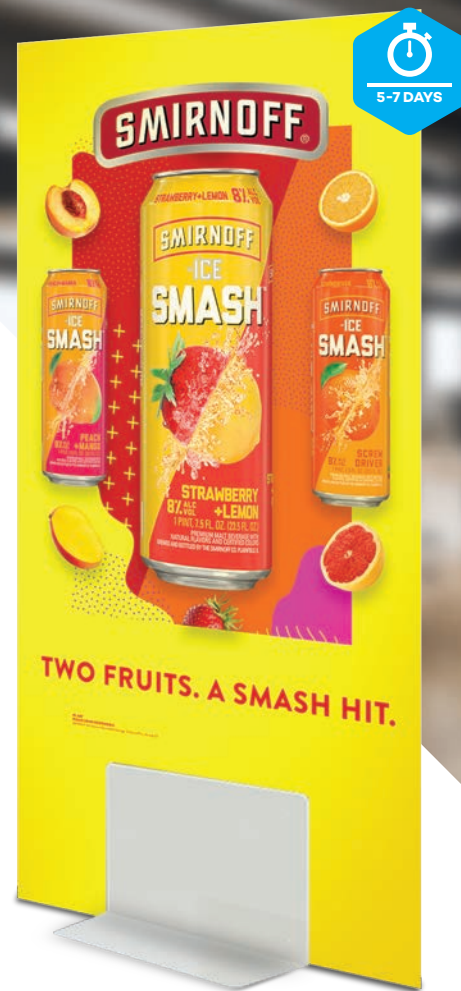


WEDGE RIGID BANNER STAND

The Wedge Rigid Panel Holder is a powder-coated white base to use with media substrates with dimensions of 600mm to 1000mm wide and up to 1500mm high.

- Supports 10mm thick Foamex boards
- Printed single or double-sided
- Powder-coated white base
- Durable and stable
- Bespoke sizes available

1000MM X 1000MM	1000MM X 600MM
Code: LWEDGE-1010-SS	Code: LWEDGE-1006-SS
1500MM X 1000MM	1500MM X 600MM
Code: LWEDGE-1510-SS	Code: LWEDGE-1506-SS



PROMO SPIN THE WHEEL

Bespoke printed Spin the Wheel with your branding and message, perfect for promotional events.

- Made of foamex PVC with a metal strut
- Printed full colour, lightweight and easy to spin
- 900mm x 1800mm
- Custom sizes available

SPIN THE WHEEL
Code: STW01



Metal strut on reverse.



Check out our

VISION LOGO MATS



WHAT ARE VISION LOGO MATS?

Impress your customers with high-quality branded door mats that ensure your retail and office floors stay clean and presentable due to their excellent dirt trapping properties. Personalised welcome mats are a great way to make your house feel like your home. Customise a domestic entrance mat with a unique welcoming message or logo.

- Custom designs
- Fully washable up to 60°C
- Hard wearing and durable
- Printed in non-fade colours
- Made from nitrile rubber
- Gripper backed
- Standard widths with borders: 60cm, 75cm, 85cm, 115cm, 150cm and 200cm
- All lengths up to 400cm
- Bespoke lengths up to 700cm

FOR MORE INFORMATION CALL 0116 266 6227

601	602	603	604	605	606	607	608	609	610	611	612	613	614	615	616	617	618	619	620	621	622	623	
624	625	626	627	628	629	630	631	632	633	634	635	636	637	638	639	640	641	642	643	644	645	646	
647	648	649	650	651	652	653	654	655	656	657	658	659	660	661	662	663	664	665	666	600			

Check out our

FULLY CUSTOM

PRINTED TAPE



PRINTED TAPE, MADE JUST HOW YOU LIKE IT.

When it comes to presenting your brand in the best way possible, printed packaging is key. We can offer an extensive range of printed tape, including eco-friendly self-adhesive paper, food contact and strong crossweave.

Various print options are available. For more information, please contact our sales team.

Check out our

LIFE SIZE STANDEES

Our life size standees are guaranteed to raise interest at your next event. Ideal for trade shows, exhibitions and even weddings and social events. These standees are available in custom shapes and size and with full colour print as standard, any design or character is possible.

PRICES AVAILABLE UPON REQUEST FOR OTHER SIZES



SHARE YOUR PHOTOS @CAREXUK USING THE #CAREX #FUNTIMES
FOR THE CHANCE TO WIN!

All promotional items must be purchased by your own self. On print of the offer you are required to present the promotional voucher. Luck only with this you receive a ticket.
*A valid voucher cannot be exchanged, you are required to purchase your second ticket at full price at Admissions and entry is not guaranteed.

Check out our

CUSTOM PRINTED

TOTE BAGS



WHY CHOOSE OUR CUSTOM PRINTED TOTE BAGS?

The perfect product for giveaways and to boost your brand awareness. This Tote Bag is a great reusable alternative to plastic carrier bags as they are produced from sustainable material so they are environmentally friendly. Designed for everyday use with a standard size of 360mm x 405mm and a 10-litre storage capacity. It has 290mm dual shoulder length handles for easy carry.

You can also select from these materials: 100% cotton, 100% recycled cotton or 100% organic cotton and pick from three bag colours natural, black and white. We offer both single- and double-sided print and you can choose up to 4 spot colours or full colour print.

FOR MORE INFORMATION CALL 0116 266 6227



STICKERS



GREETING CARDS



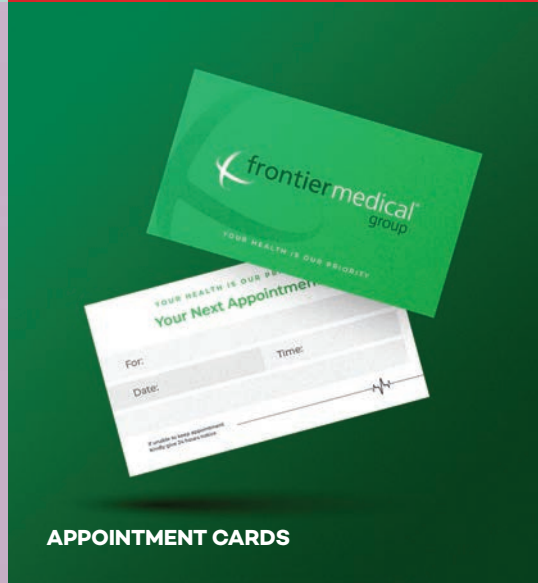
CALENDARS



GIFT TAGS



PLASTIC CARDS



APPOINTMENT CARDS



SPOT UV BUSINESS CARDS



SMALL RUN LEAFLETS



WEDDING STATIONERY

DIGITAL PRINTING

When utilising digital printing, there is no need for a printing plate, unlike with litho printing. Digital files such as PDFs or desktop publishing files can be printed directly on to paper, photo paper, card stock and other materials. This process is great for small run jobs as the setup costs are lower, so you'll only print the amount you need, when you need it.



STAPLED BROCHURES



LEAFLETS/FOLDED LEAFLETS



BUSINESS CARDS



POSTERS



PRESENTATION FOLDERS



PERFECT BOUND BROCHURES



NOTEPADS



A4 LETTERHEADS



NCR PADS

LITHO PRINTING

Litho printing, or offset printing as it's also known, is a popular technique as it can accommodate heavier weights of paper and is often more cost effective when printing in larger numbers. This technique is great for high quality brochures, catalogues, handbooks, prospectuses, magazines, anything which needs sharp, vibrant printing in high numbers. Large quantities can be printed cost effectively, so the more you print, the cheaper the price per piece.



MUGS



BAGS



PENS



USB STICKS



POWER BANKS



LANYARDS



NOTEBOOKS



DRINK TUMBLERS



MAILING BOXES

PROMOTIONAL GIFTS

Branded promotional merchandise, such as pens, mugs and bags, are powerful advertising tools. They can be printed with a logo, marketing message or contact information and are a proven way of not only introducing new customers to your company but also maintaining a great relationship with your current clients. We can help with a huge range of promotional goods, so please contact us today for more information.



FOAMEX 3MM/5MM/10MM

Ideal for display and exhibition, POS / POP display, digital & screen printing, exhibition directional signage (indoors and outdoors), Shell schemes, selfie frames, selfie cut outs, desk signs, general shop signage and fascias, directional signage.



CORREX 3.5MM/5MM/6MM

Ideal for display and exhibition, POS / POP display, digital & screen printing, exhibition directional signage (indoors and outdoors), building site signage, short term signage jobs, bollard cover, estate agent signs.



DIBOND 3MM/4MM/6MM

Ideal for display and exhibition, POS / POP display, digital & screen printing, photo mounting, interior design, industry and transport, general shop signage and fascias, directional signage, event and exhibition signage, street signage, indoors and outdoors.



ACRYLIC 5MM/10MM

Ideal for offices, POS / POP display, indoors and outdoors, house signs, door signs, photo mounting, awards and plaques.



DISPLAY BOARD 2MM

Ideal for indoors, hanging signs, on walls, puzzles, short term signage.



DISPA DISPLAY BOARD 800GSM

Ideal for internal POS/POP display, retail and office hanging signs.



CORRUGATED BOARDS

Ideal for cardboard boxes, postal boxes, postal wraps and box sleeves.

RIGID MEDIA
PRINTED BOARDS

Rigid Signs are a keyway to optimise business-related projects. Our rigid boards come in a choice of materials. These durable signs can be utilised for advertising, campaigning, wall art, promotions, events, openings, real estate, amongst other things. All of which can be cut to a custom shape to suit your specifications.



DID YOU KNOW...

We are specialists in the following...

We facilitate customers of all sizes and provide a tailored end-to end print management service with exceptional results. Our ethos and culture are developed around a family business model and maintaining close relationships with our customers is the key to our continued success.

- A** A Boards
Acrylic Displays
Acrylic Printing
Appointment Cards
Atlas Ad Flags
Automatic Counters
Aluminium Poster Stands

- B** Backpack Flags
Bannerbow Systems
Banners
Barrier Jackets
Beanbags
Beer Mats
Bespoke Printing
Bollard Wraps
Booklets
Brochures
Budget A-boards
Bunting
Business Stationery
Business Cards

- C** Cable Systems
Café Barriers
Calendars
Cardboard Display Triangles
Chalkboards
Character Standees
Christmas Cards
Correx Boards
Crowd Barrier Jackets
Cube Seats
Cushions
Custom Flags
Calendars
Canvas Prints

- D** Deck Chairs
Desk Pads
Desktop Flags
Desktop Roller Banners
Dibond Boards
Digital Advertising Displays
Digital Booklets
Directors Chairs
Double-sided Roller Banners
Drum Fabric Displays
Dry Wipe Boards

- E** Eco-friendly
Estate Agent Boards
Exhibition Stands
Expovision Roller Banners

- F** Fabric Super Lightweight System
Feather Flags
Fence Scrim
Finesse Demo Counters
Floor Graphics
Flyers
Foamex Boards
Foil Printing
Folding Panel Kits
Forecourt Flags
Free-standing Cardboard Totem Displays
Free-standing Display Units
Free-standing Lightboxes
Floor Tape

- G** Gazebos
Giant Rhino Portable Flags
Glass Printing
Greeting Cards
Giant Cheques
Green Screen Banners

- H** Handwaving Flags
Hanging Banners
Hanging Displays
Heras Fencing
Hand Clappers

- I** Inflatable Tents
Information Stands
Interior Graphics
Invitations
iPad Holders

- J** Junior Folding Panel Kits

- K** Keder Fabric
Knitted Polyester
Kraft Business Cards

- L** Labels
Large-format Posters
Leaflet Dispensers
Leaflets
LED Lightboxes
LED Lights
Letterheads
Life-size Standees
Literature Stands
Litho Printing
Logo Mats

- M** Magnetic Boards
Magnetic Free-standing Frames
Media Walls
Meeting Pods
Menus
Merchandising Displays
Monsoon Banners
Magnetic Signs
Mesh Banners

- N** NCR Pads
Newsletters
Note Pads
Notebooks
Noticeboards

- O** Outdoor Banners
Outdoor Displays

- P** Parasols
Pitch Graphics
Podium Stands
Pop-out Banners
Pop-up Counters
Pop-up Display Kits
POS Stacking Display Cubes
Postcards
Posters
Perfect Bound Booklets
Presentation Folders
Printed Doors
Printed Paddles
Promo Counters
Promo Spin-the-Wheel
Promotional Products
PVC Banners

- Q** Quick Pop-up Bundles
Quick Tower Pop-ups

- R** Receipt Books
Rectangle Flags
Replacement Cassette Banners
Retail Signs
RSVP Cards
Recycled Range

- S** SEG Fabric Counters
SEG Fabric Pop-up Stands
SEG Pop-up Fabric Counters
Selfie Frames
Selfie Props
Shell Scheme Graphics
Snap Frames
Soft Touch Banner Stands
Soft Touch Drum Fabric Displays
Soft Touch Fabric Counters
Soft Touch Fabric Displays
Soft Touch iPad Stands
Soft Touch Meeting Pods
Soft Touch Snake Stands
Solus Demo Counters
Stadium Pitch Banners
Star Tents
Stickers
Stretch Tablecloths
Strut Cards

- T** Tablecloths
Tableplans
Teardrop Flags
Tension Fabric Systems
Trestle Tables
Twist Display Systems
Table Talkers

- U** Unbranded Samples

- V** Vinyl Banners
Vision Print Mats
Vision Site Master A-boards
Vortex Tension Banners

- W** Wall Graphics
Wall Mount Tension Fabric Systems
Wall Planners
Wallpaper Printing
Wedding Stationery
Wedge Rigid Banner Stands
White Boards
Wide Roller Banners
Windance Flags
Window Vinyl
Wood Printing
Wrapping Paper

- X** Xclaim Pop Up Stands

- Y** Yearly Wall Planners

- Z** Zed Up Literature Stands
Zenith Cases

Plus much more!

ROLL MEDIA INDOOR & OUTDOOR

POSTERS, WALLPAPER, PVC BANNERS, VINYL & G-FLOOR

POSTER PAPER

150gsm - 170gsm available, printed full colour to your custom size.

PVC 440GSM

Ideal for outdoor banners, barrier jackets, hanging banners and backdrops.

KNITTED POLYESTER 115GSM

Ideal for flags, scrim banners, barrier covers, bunting and wind breakers.

AIR MESH 115GSM

Ideal for flags, scrim banners, barrier covers, bunting and wind breakers.

TAFFETA 70GSM /VOILE POLYESTER FABRIC 55GSM

Ideal for flags soft display purposes, window displays, backdrops, events, retail and exhibitions.

DISPLAY POLYESTER 210GSM

Ideal for tablecloths, murals, cushions, backdrops and curtains.

VINYL (CLEAR & WHITE)

Ideal for windows, walls and low tech vinyl.

SOFLAT 420GSM

Ideal for roller banners, shell scheme panels and display and exhibition panels.

WALLPAPER

Ideal for wall coverage, printed full colour to your custom size.

SPANDEX POLY-STRETCH 270GSM

Ideal for tension fabric frames, fabric stands and fabric counters.

BACKLIT 240GSM

Ideal for lightbox frames and other backlit items for advertising.

NIGHTSTAR BLOCK OUT FABRIC 280GSM

Ideal for tension fabric frames, car covers and soft signage.

TENT MATERIAL 260GSM

Ideal for gazebos, bean bags, parasols, cubes and furniture.

POLYCRIL

Ideal for custom printed wallpaper. Used for offices, exhibition spaces, pop up shops, stores, restaurants, schools, stage backdrops, one off events and wall mural effects.

330MIC POLYPROPYLENE

Ideal for Pop-up stands, displays, exhibition panels and counters.

G-FLOOR CERAMIC EFFECT/ WOOD GRAIN EFFECT

Ideal for floor mats, reception areas, offices, showroom floors, shopping centres, dance floors, theatre floors, sporting events, exhibitions and visitor attractions.

*Please ask for
more details!*



WINDOW GRAPHICS



PVC BANNERS



BEAN BAGS



FLOOR GRAPHICS



PRINTED WALLPAPER



LIGHT BOXES



CAR COVERS



GAZEBOS

LinkUP

MODULAR DISPLAY FRAMES

NEW
PRODUCT
FOR
2024



USE OUR LINK UP RANGE TO CONFIGURE YOUR OWN EXHIBITION STAND TO HOWEVER YOU LIKE WITHOUT ANY TOOLS REQUIRED. THIS IS THE PERFECT FABRIC DISPLAY FOR EXHIBITIONS, TRADE SHOWS AND EVENTS.

As we offer full colour print, you can create a seamless exhibition stand which is sure to catch everyone's attention and leave a memorable impression.

- SEG Blackback graphics
- Quick and tool free assembly
- Lightweight and portable
- Carry bag included
- 1-year warranty on hardware

2000MM (H) X 950MM (W)

Code: LUF-950

2000MM (H) X 1000MM (W)

Code: LUF-1000

DOOR: 2000MM (H) X 980MM (W)

Code: LUD-980

EXTENSION SIZES 2300MM AND 2500MM ARE AVAILABLE UPON REQUEST.
CALL 0116 266 6227 FOR MORE INFORMATION.

LINKUP

MODULAR DISPLAY FRAMES



Create your own modular environment to create a stunning display. We will provide the connectors needed so you will have everything you need for a stable and secure stand. The LinkUP Modular Display Frames are suitable for both shell schemes and any indoor event.

Whether is it for a 3x3, 5x3 or 6x3 stand, we have a range of configurations to fit various size requirements which is sure to make you stand out and create a memorable impression. You can expand your stand whenever you want and change the design with ease.



KIT 1 - 3X3
Code: **LUSK-1**

Frames are also available in heights of 2000mm, 2300mm and 2500mm



KIT 2 - 4X4
Code: **LUSK-2**

Frames are also available in heights of 2000mm, 2300mm and 2500mm



KIT 3 - 6X3
Code: **LUSK-3**

Frames are also available in heights of 2000mm, 2300mm and 2500mm



KIT 4 - 6X3
Code: **LUSK-4**

Frames are also available in heights of 2000mm, 2300mm and 2500mm

VOLUME

24

CORE

COLLECTION

◀◀◀ DISPLAY AND PRINT SOLUTIONS ▶▶▶

DRAYTON

CREATIVE DESIGNS
INNOVATIVE IDEAS
FABULOUS RESULTS

472 Basingstoke Road
Reading
Berkshire
RG2 0QN

t. 0118 40 22 777
www.drayton.co.uk
sales@drayton.co.uk